

APPENDICES

GENERAL

TABLE I

Table showing Taluk-wise Primary Census Figures as in 1971 in Bellary District

Sl. No.	Taluk	Total	Occupied residential houses	No. of households	Total population (including institutional and houseless population)			Literate and educated persons			Total workers		
					P	M	F	P	M	F	P	M	F
					1	2	3	4	5	6	7	8	9
1.	Bellary ..	T	47,857	52,221	2,65,294	1,36,282	1,29,012	85,148	59,778	25,370	96,901	72,523	24,378
		R	26,221	27,642	1,40,111	70,754	69,357	26,148	21,808	4,340	61,163	41,266	19,897
		U	21,636	24,579	1,25,183	65,528	59,655	59,000	37,970	21,030	35,738	31,257	4,481
2.	Hadagalli ..	T	21,340	22,561	1,27,452	64,061	63,391	33,670	25,053	8,617	47,832	35,612	12,220
		R	19,553	20,680	1,16,997	58,586	58,411	30,270	22,766	7,504	44,400	32,800	11,600
		U	1,787	1,881	10,455	5,475	4,980	3,400	2,287	1,113	3,432	2,812	620
3.	Harapanahalli ..	T	23,712	25,664	1,45,714	73,917	71,797	37,475	27,421	10,054	52,277	41,196	11,081
		R	20,389	22,236	1,26,020	63,776	62,244	31,045	23,301	7,744	46,455	36,190	10,266
		U	3,323	3,428	19,694	10,141	9,553	6,430	4,120	2,310	5,822	5,006	815
4.	Hospet ..	T	34,391	36,741	1,87,830	96,094	91,736	55,093	38,329	16,764	71,449	53,833	17,616
		R	14,543	15,521	77,089	39,058	38,031	15,045	11,795	3,250	33,909	23,293	10,616
		U	19,848	21,220	1,10,741	57,036	53,705	40,048	26,534	13,514	37,540	30,540	7,000
5.	Kudligi ..	T	27,866	28,222	1,57,456	79,453	78,003	39,280	28,917	10,363	60,359	45,343	15,016
		R	25,634	25,869	1,44,583	72,757	71,826	32,979	24,794	8,185	56,425	42,270	14,155
		U	2,232	2,353	12,873	6,696	6,177	6,301	4,123	2,175	3,934	3,073	861
6.	Mallapuram ..	T	5,974	6,303	35,933	18,108	17,825	8,165	6,215	1,914	14,383	10,357	4,026
		R	5,974	6,303	35,933	18,108	17,825	8,165	6,215	1,914	14,383	10,357	4,026
		U											
7.	Sandur ..	T	17,071	17,990	92,904	47,832	45,072	5,179	1,412	3,767	34,455	26,496	7,959
		R	17,071	17,990	92,904	47,832	45,072	5,179	1,412	3,767	34,455	26,496	7,959
		U											
8.	Siruguppa ..	T	21,025	23,967	1,10,103	55,057	55,046	17,990	14,366	3,624	48,806	33,182	15,624
		R	15,976	17,992	84,277	42,202	42,075	12,634	10,426	2,208	38,121	25,903	12,218
		U	5,049	5,975	25,826	12,855	12,971	5,356	3,940	1,416	10,685	7,279	3,406
Bellary District ..	T	1,99,236	2,13,669	11,22,686	5,70,804	5,51,882	2,82,000	2,01,527	80,473	4,26,462	3,18,542	1,07,920	
	R	1,45,361	1,54,233	8,17,914	4,13,073	4,04,841	1,61,465	1,22,553	38,912	3,29,311	2,38,575	90,736	
	U	53,875	59,436	3,04,772	1,57,731	1,47,041	1,20,535	78,974	41,561	97,151	79,967	17,184	

Note : P—Persons ; M—Males ; F—Females ; T—Total ; R—Rural ; U—Urban

Table I (contd.)

Sl. No.	Taluk	Total	Cultivators			Agricultural Labourers			Livestock, Forestry, etc.			Mining and Quarrying		
			P	M	F	P	M	F	P	M	F	P	M	F
1	2	3	15	16	17	18	19	20	21	22	23	24	25	26
1. Bellary	..	T	22,260	18,071	4,189	32,901	18,402	14,499	954	856	98	1,017	764	253
		R	21,248	17,189	4,059	31,385	17,366	14,019	732	648	84	717	520	197
		U	1,012	882	130	1,516	1,036	480	222	208	14	300	244	56
2. Hadagalli	..	T	16,196	14,566	1,630	22,806	13,891	8,915	973	863	110	4	3	1
		R	15,428	13,894	1,534	21,179	12,699	8,480	940	335	105	4	3	1
		U	768	672	96	1,627	1,192	435	33	28	5
3. Harapanahalli	..	T	22,706	21,023	1,683	20,721	12,735	7,986	1,233	1,017	216	1	1	..
		R	21,351	19,706	1,645	19,634	11,921	7,713	1,044	844	200
		U	1,355	1,317	38	1,087	814	273	189	173	16	1	1	..
4. Hospet	..	T	14,145	12,076	2,069	29,523	17,557	11,966	850	731	119	3,503	2,325	1,178
		R	10,634	8,870	1,764	16,109	9,102	7,007	418	345	73	2,699	1,674	1,025
		U	3,511	3,206	305	13,414	8,455	4,959	432	386	46	804	651	153
5. Kudligi	..	T	29,184	25,525	3,659	22,434	12,628	9,806	1,003	911	92	2	2	..
		R	28,504	24,900	3,604	20,847	11,683	9,164	982	897	85	2	2	..
		U	680	625	55	1,587	945	642	21	14	7
6. Mallapuram	..	T	6,265	5,479	786	5,805	2,978	2,827	393	358	35	445	283	162
		R	6,265	5,479	786	5,805	2,978	2,827	393	358	35	445	283	162
7. Sandur	..	T	13,168	11,241	1,927	9,752	6,364	3,388	396	362	34	4,814	3,555	1,259
		R	13,168	11,241	1,927	9,752	6,364	3,388	396	362	34	4,814	3,555	1,259
8. Siruguppa	..	T	15,075	12,451	2,624	27,246	15,427	11,819	406	356	50	1	1	..
		R	13,194	10,820	2,374	21,112	12,117	8,995	363	314	49	1	1	..
		U	1,881	1,631	250	6,134	3,310	2,824	43	42	1
Bellary District	..	T	1,38,999	1,20,432	18,567	1,71,188	99,982	71,206	6,208	5,454	754	9,787	6,934	2,853
		R	1,29,792	1,12,099	17,693	1,45,823	84,230	61,593	5,268	4,603	665	8,682	6,038	2,644
		U	9,207	8,333	874	25,365	15,752	9,613	940	851	89	1,105	896	209

Table I (contd.)

Sl. No.	Taluk	Total	Manufacturing, processing, servicing and other repairs											
			(a) Household industry			(b) Other than household industry			Construction			Trade and Commerce		
			P	M	F	P	M	F	P	M	F	P	M	F
1	2	3	27	28	29	30	31	32	33	34	35	36	37	38
1.	Bellary ..	T	4,104	3,094	1,010	7,251	6,684	567	2,525	2,299	226	7,818	7,202	616
		R	1,210	818	392	698	655	43	588	531	57	1,149	845	304
		U	2,894	2,276	618	6,553	6,029	524	1,937	1,768	169	6,669	6,357	312
2.	Hadagalli ..	T	1,850	1,356	494	908	666	242	690	553	137	1,788	1,557	231
		R	1,731	1,253	478	832	600	232	666	530	136	1,461	1,250	211
		U	119	103	16	76	66	10	24	23	1	327	307	220
3.	Harapanahalli ..	T	1,728	1,379	349	821	630	191	499	451	48	1,604	1,371	233
		R	1,298	1,062	236	335	280	55	277	269	8	819	634	185
		U	430	317	113	486	350	136	222	182	40	785	737	48
4.	Hospet ..	T	1,386	1,143	243	5,917	5,691	226	1,797	1,577	220	5,450	4,960	490
		R	523	408	115	484	420	64	255	208	47	859	717	142
		U	863	735	128	5,433	5,271	162	1,542	1,369	173	4,591	4,243	348
5.	Kudligi ..	T	2,006	1,302	704	915	813	102	591	500	91	1,564	1,287	277
		R	1,676	1,037	639	694	596	98	561	471	90	996	763	233
		U	330	265	65	221	217	4	30	29	1	568	524	44
6.	Mallapuram ..	T	378	296	82	112	104	8	143	120	23	304	256	43
		R	378	296	82	112	104	8	143	120	23	304	256	48
		T	711	579	132	249	234	15	337	313	24	827	675	152
7.	Sandur ..	R	711	579	132	249	234	15	337	313	24	827	675	152
		T	1,269	892	377	481	424	57	349	312	37	1,324	1,134	190
		R	792	547	245	164	149	15	233	206	27	543	416	127
8.	Siruguppa ..	U	477	345	132	317	275	42	116	106	10	781	718	63
		T	13,432	10,041	3,391	16,654	15,246	1,408	6,931	6,125	806	20,679	18,442	2,237
		R	8,319	6,000	2,319	3,568	3,038	530	3,060	2,648	412	6,958	5,556	1,402
		U	5,113	4,041	1,072	13,086	12,208	878	3,871	3,427	394	13,721	12,886	835

Table I (concl.)

Sl. No.	Taluk	Total	Transport, Storage and Communications			Other Services			Non-workers		
			P	M	F	P	M	F	P	M	F
1	2	3	39	40	41	42	43	44	45	46	47
1.	Bellary ..	T	6,342	5,495	847	11,729	9,656	2,073	1,68,393	63,759	1,04,634
		R	731	551	180	2,705	2,143	562	78,948	29,488	49,460
		U	5,611	4,944	667	9,024	7,513	1,511	89,445	34,271	55,174
2.	Hadagalli ..	T	265	258	7	2,352	1,899	453	79,620	28,449	51,171
		R	213	212	1	1,946	1,524	422	72,597	25,786	46,811
		U	52	46	6	406	375	31	7,023	2,663	4,360
3.	Harapanahalli ..	T	472	383	89	2,492	2,206	286	93,437	32,721	60,716
		R	75	67	8	1,622	1,407	215	79,565	27,586	51,979
		U	397	316	81	870	799	71	13,872	5,135	8,737
4.	Hospet ..	T	3,406	3,081	325	5,472	4,692	780	1,16,381	42,261	74,120
		R	754	593	161	1,174	956	218	43,180	15,765	27,415
		U	2,652	2,488	164	4,298	3,736	562	73,201	26,496	46,705
5.	Kudligi ..	T	240	230	10	2,420	2,145	275	97,097	34,110	62,987
		R	199	189	10	1,964	1,732	232	88,158	30,487	57,671
		U	41	41	..	456	413	43	8,939	3,623	5,316
6.	Mallapuram ..	T	40	39	1	498	444	54	21,550	7,751	13,799
		R	40	39	1	498	444	54	21,550	7,751	13,799
		U
7.	Sandur ..	T	2,182	1,604	578	2,019	1,569	450	58,449	21,336	37,113
		R	2,182	1,604	578	2,019	1,559	450	58,449	21,336	37,113
		U
8.	Siruguppa ...	T	163	153	10	2,492	2,032	460	61,297	21,875	39,422
		R	47	46	1	1,672	1,287	385	46,156	16,299	29,857
		U	116	107	9	820	745	75	15,141	5,576	9,565
Bellary District	T	13,110	11,243	1,867	29,474	24,643	4,831	6,96,224	2,52,262	4,43,962	
	R	4,241	3,301	940	13,600	11,062	2,538	4,88,603	1,74,498	3,14,105	
	U	8,869	7,942	927	15,874	13,581	2,293	2,07,671	77,764	1,29,857	

TABLE II
Taluku in Bellary District classified by Population in 1971 with variations since 1901

<i>Taluk</i>	<i>Year</i>	<i>Persons</i>	<i>Variation</i>	<i>Males</i>	<i>Variation</i>	<i>Females</i>	<i>Variation</i>
1	2	3	4	5	6	7	8
Bellary	1901	1,38,305	..	69,942	..	68,363	..
	1911	1,24,114	- 14,191	63,271	- 6,671	60,843	- 7,520
	1921	1,10,265	- 13,849	56,440	- 6,831	53,825	- 7,018
	1931	1,32,133	+ 21,868	67,374	+ 10,934	64,759	+ 10,934
	1941	1,51,403	+ 19,270	77,135	+ 9,761	74,268	+ 9,509
	1951	1,84,929	+ 33,526	95,305	+ 18,170	89,624	+ 15,356
	1961	2,02,837	+ 17,908	1,04,246	+ 8,941	98,591	+ 8,967
	1971	2,65,294	+ 62,457	1,36,282	+ 32,036	1,29,012	+ 30,421
	Hadagalli	1901	67,864	..	34,134	..	33,730
1911		69,000	+ 1,136	34,546	+ 412	34,454	+ 724
1921		58,661	- 10,339	29,889	- 4,657	28,772	- 5,682
1931		64,646	+ 5,985	32,246	+ 2,357	32,400	+ 3,628
1941		69,070	+ 4,424	34,795	+ 2,549	34,275	+ 1,875
1951		76,446	+ 7,376	38,270	+ 3,475	38,176	+ 3,901
1961		1,10,334	+ 33,888	55,842	+ 17,572	54,492	+ 16,316
1971		1,27,452	+ 17,118	64,061	+ 8,219	63,391	+ 8,899
Harapanahali		1901	95,499	..	48,534	..	46,965
	1911	97,234	+ 1,735	48,972	+ 438	48,262	+ 1,297
	1921	82,968	- 14,266	42,528	- 6,444	40,440	- 7,822
	1931	1,00,069	+ 17,101	51,775	+ 9,247	48,294	+ 7,854
	1941	1,04,915	+ 4,846	53,787	+ 2,012	51,128	+ 2,834
	1951	1,17,633	+ 12,718	59,575	+ 5,788	58,058	+ 6,930
	1961	1,28,705	+ 11,072	65,582	+ 6,007	63,123	+ 5,065
	1971	1,45,714	+ 17,009	73,917	+ 8,335	71,797	+ 8,674

BELLARY DISTRICT

713

Table II (contd.)

1	2	3	4	5	6	7	8
Hospet	1901	78,059	..	40,598	..	37,461	..
	1911	72,013	- 6,046	36,849	- 3,749	35,164	- 2,297
	1921	67,878	- 4,135	34,233	- 2,616	33,645	- 1,519
	1931	70,040	+ 2,162	35,981	+ 1,748	34,059	+ 414
	1941	77,676	+ 7,636	39,031	+ 3,050	38,645	+ 4,586
	1951	1,26,448	+ 48,772	66,056	+ 27,025	60,392	+ 21,747
	1961	1,53,713	+ 27,265	79,436	+ 13,380	74,277	+ 13,885
	1971	1,87,830	+ 34,117	96,094	+ 16,658	91,736	+ 17,459
Kudligi	1901	89,219	..	45,273	..	43,946	..
	1911	94,355	+ 5,136	47,588	+ 2,315	46,767	+ 2,821
	1921	80,839	- 13,516	41,157	- 6,431	39,682	- 7,085
	1931	94,856	+ 14,017	48,466	+ 7,309	46,390	+ 6,708
	1941	99,805	+ 4,949	50,966	+ 2,500	48,839	+ 2,449
	1951	1,08,462	+ 8,657	55,092	+ 4,126	53,370	+ 4,531
	1961	1,35,971	+ 27,509	69,260	+ 14,168	66,711	+ 13,341
	1971	1,57,456	+ 21,485	79,453	+ 10,193	78,003	+ 11,292
Mallapuram	1901	26,838	..	13,571	..	13,267	..
	1911	26,891	+ 53	13,507	- 64	13,384	+ 117
	1921	23,220	- 3,671	11,812	- 1,695	11,408	- 1,976
	1931	25,333	+ 2,113	12,692	+ 880	12,641	+ 1,233
	1941	27,219	+ 1,886	14,021	+ 1,329	13,198	+ 557
	1951	32,305	+ 5,086	16,174	+ 2,153	16,131	+ 2,933
	1961	28,559	- 3,746	14,210	- 1,964	14,349	- 1,782
	1971	35,933	+ 7,374	18,108	+ 3,898	17,825	+ 3,476

Table II (concl'd.)

1	2	3	4	5	6	7	8
Sandur	1901	48,440	..	24,875	..	23,565	..
	1911	49,819	+ 1,379	25,253	+ 378	24,566	+ 1,001
	1921	40,232	- 9,587	20,303	- 4,950	19,929	- 4,637
	1931	44,261	+ 4,029	22,726	+ 2,423	21,535	+ 1,606
	1941	49,509	+ 5,248	25,185	+ 2,459	24,324	+ 2,789
	1951	52,523	+ 3,014	26,726	+ 1,541	25,797	+ 1,473
	1961	67,595	+ 15,072	34,522	+ 7,796	33,073	+ 7,276
	1971	92,904	+ 25,309	47,832	+ 13,310	45,072	+ 11,999
Siruguppa	1901	63,899	..	32,092	..	31,807	..
	1911	71,608	+ 7,709	36,128	+ 4,036	35,480	+ 3,673
	1921	59,565	- 12,043	30,179	- 5,949	29,386	- 6,094
	1931	62,432	+ 2,867	31,188	+ 1,009	31,244	+ 1,858
	1941	69,431	+ 6,999	35,070	+ 3,882	34,361	+ 3,117
	1951	74,966	+ 5,535	37,836	+ 2,766	37,130	+ 2,769
	1961	87,547	+ 12,581	43,825	+ 5,989	43,722	+ 6,592
	1971	1,10,103	+ 22,556	55,057	+ 11,232	55,046	+ 11,324

BELLARY DISTRICT

TABLE III

Towns and Town-groups in Bellary District classified by population in 1971 with variations since 1901

<i>Name of Town</i>	<i>Year</i>	<i>Persons</i>	<i>Decade variation</i>	<i>Percentage decade variation</i>	<i>Males</i>	<i>Females</i>
1	2	3	4	5	6	7
Bellary	1901	58,247	29,699	28,548
	1911	34,956	- 23,291	- 39.99	18,474	16,482
	1921	39,842	+ 4,886	+ 13.98	21,113	18,729
	1931	47,573	+ 7,731	+ 19.40	25,405	22,168
	1941	56,148	+ 8,575	+ 18.02	29,269	26,879
	1951	70,322	+ 14,174	+ 25.24	36,897	33,425
	1961	85,673	+ 15,351	+ 21.83	45,243	40,430
	1971	1,25,183	+ 39,510	+ ..	65,528	59,655
Hospet	1901	18,482	9,289	9,193
	1911	16,937	- 1,545	- 8.36	8,408	8,529
	1921	18,337	+ 1,400	+ 8.27	9,132	9,205
	1931	21,673	+ 3,336	+ 18.19	10,858	10,815
	1941	26,023	+ 4,350	+ 20.07	13,095	12,928
	1951	38,651	+ 12,628	+ 48.53	19,617	19,034
	1961	53,242	+ 14,591	+ 27.75	27,210	26,032
	1971	1,10,741	+ 57,499	..	57,036	53,705

Table III (concl'd.)

	1	2	3	4	5	6	7	
Harapanahalli	1901	9,320	4,708	4,612
			1911	8,898	422	- 4.53	4,376	4,522
			1921	7,464	- 1,434	- 16.12	3,831	3,633
			1931	8,773	+ 1,309	+ 17.54	4,451	4,322
			1941	11,716	+ 2,943	+ 33.55	6,044	5,672
			1951	14,157	+ 2,441	+ 20.83	7,142	7,015
			1961	17,763	+ 3,606	+ 25.47	9,105	8,658
			1971	19,694	+ 1,931	..	10,141	9,553
Kamalapur	1961	14,516	7,564	6,952
			1971	13,879	7,017	6,862
Kampli	1901	9,803	5,032	4,771
			1911	7,636	- 2,167	- 22.11	3,837	3,799
			1921	7,298	- 338	- 4.43	3,598	3,700
			1931	7,281	- 17	- 0.23	3,853	3,428
			1941	7,903	+ 622	+ 8.54	3,918	3,985
			1951	8,417	+ 514	+ 6.50	4,192	4,225
			1961	14,222	+ 5,805	+ 68.97	7,483	6,739
			1971	19,917	10,222	9,695
Kottur	1901	6,996	3,461	3,535
			1911	6,552	- 474	- 6.78	3,277	3,245
			1921	6,372	- 150	- 2.30	3,290	3,082
			1931	6,943	+ 571	+ 8.96	3,542	3,401
			1941	8,097	+ 1,154	+ 16.62	4,050	4,047
			1951	9,808	+ 1,711	+ 21.13	5,031	4,777
			1961	11,493	+ 1,685	+ 17.18	5,890	5,603
			1971	12,373	6,696	6,177
Amaravati	1961	9,628	5,173	4,455
			1971	10,972	1,344	..	5,835	5,137

TABLE IV

Statement showing sex-wise population figures as in 1961 and 1971 in rural areas of the taluks in Bellary District.

Sl. No.	Taluk	1961 Population			1971 Population		
		Persons	Males	Females	Persons	Males	Females
1.	Bellary	117,164	59,003	58,161	140,111	70,754	69,357
2.	Hadagalli	110,334	55,842	54,492	116,997	58,586	58,411
3.	Harapanahalli	110,942	56,477	54,465	126,020	63,776	62,244
4.	Hospet	62,105	32,006	30,099	77,089	39,058	38,031
5.	Kudligi	124,478	63,370	61,108	144,583	72,757	71,826
6.	Mallapuram	28,559	14,210	14,349	35,933	18,108	17,825
7.	Sandur	67,595	34,522	33,073	92,904	47,832	45,072
8.	Siruguppa	87,547	43,825	43,722	84,277	42,202	42,075
	Total	708,724	359,255	349,469	817,914	413,073	404,841

TABLE V

Area and Population (Rural and Urban) of Bellary District as in 1961

Sl. No.	Taluk	Area in square miles	Area in square kilometres	Population 1961			Density		Population in 1951	Percentage increase/decrease over 1951
				Rural	Urban	Total	Per square mile	Per square kilometre		
1.	Bellary ..	651.56	1,687.53	117,164	85,673	202,837	311	120	184,929	+ 9.68
2.	Hadagalli ..	572.54	1,482.87	110,334	..	110,334	276	106	76,446	+ 44.43
3.	Harapanahalli ..	468.26	1,212.78	110,942	17,763	128,705	211	82	117,633	+ 9.41
4.	Hospet ..	344.81	893.05	62,105	91,608	153,713	400	154	126,448	+ 21.56
5.	Kudligi ..	704.72	1,825.21	124,478	11,493	135,971	193	75	108,462	+ 25.36
6.	Mallapuram ..	195.42	506.13	28,559	..	28,559	152	59	32,305	- *11.60
7.	Sandur ..	482.20	1,248.89	67,595	..	67,595	141	54	52,523	+ 28.70
8.	Siruguppa ..	401.95	1,041.04	87,547	..	87,547	218	84	74,966	+ 16.78
	Total ..	3,821.46**	9,897.50**	708,724	206,537	915,261	240	92	773,712	+ 18.29

*The decrease was due to submergence of many of its villages in the Tungabhadra Reservoir.

**These figures are according to the Survey of India. But the reporting area of the district for land utilisation purposes as worked out by the State Survey Department was 9,895.9 square kilometres or 3,820.8 square miles. This slight difference is due to the different methods employed in measuring the area (See also Chapter I).

TABLE VI

Occupational classification of persons at work (other than cultivation) in Bellary District as in 1961

<i>Sl. No.</i>	<i>Occupations</i>	<i>Males</i>	<i>Females</i>	<i>Total</i>
1	2	3	4	5
1.	Engineers, Architects and Surveyors	367	..	367
2.	Physicians, Surgeons and Dentists	294	18	312
3.	Nurses, Pharmacists and other Medical and Health Technicians	465	198	663
4.	Teachers	2,568	442	3,010
5.	Jurists (including Legal Practitioners and Legal Advisors) ..	138	..	138
6.	Artists, Writers and related workers	464	60	524
7.	Administrative, Executive and Managerial workers (both Government and private).	3,344	269	3,613
8.	Clerical and related workers (including Stenographers, Typists, Book-keepers, Cashiers, etc.).	7,420	142	7,562
9.	Un-skilled office workers (including Attendants, etc.) ..	2,815	99	2,914
10.	Working Proprietors (wholesale and retail trade) ..	9,134	2,593	11,727
11.	Salesmen, Shop-Assistants and related workers ..	1,367	366	1,733
12.	Farmers, Farm-workers (Animals, birds, and insect rearers, Fishermen, Gardeners, Tappers, etc.)	4,426	774	5,200
13.	Workers in Transport and Communication occupations (including Railways, Road Transport, Posts and Telegraphs, etc.)	3,745	54	3,799
14.	Spinners, Weavers, Dyers and related workers ..	1,829	1,814	3,643
15.	Tailors, Cutters and related workers	2,857	607	3,464
16.	Shoe-makers, Show-repairers, Leather-cutters and related workers	697	43	740

Table VI (concl.)

1	2	3	4	5
17.	Blacksmiths, Furnacemen and related workers ..	1,435	38	1,473
18.	Jewellers, Goldsmiths and Silversmiths ..	1,319	55	1,374
19.	Tool-makers, Machanists, Welders and related workers ..	2,057	103	2,160
20.	Electricians and related workers ..	600	4	604
21.	Carpenters, Cabinet-makers and related workers ..	2,830	75	2,905
22.	Brick-layers, Plasterers, Stone-cutters and other construction workers.	4,290	1,264	5,554
23.	Potters, Kilnmen, Clay-formers and related workers ..	817	434	1,251
24.	Millers, Bakers, Oilseed-pressers, Pounders and related food and beverage workers.	1,493	433	1,926
25.	Basket-weavers and production process workers ..	1,404	2,534	3,938
26.	Policemen, Guards, Watchmen and related workers ..	1,584	5	1,589
27.	Cooks, Maids, House-keepers and related workers ..	1,521	391	1,912
28.	Waiters, Bar-tenders and related workers ..	801	21	822
29.	Cleaners, Sweepers, Watermen, Building-caretakers, etc. ..	1,379	453	1,832
30.	Barbers, Hair-dressers and related workers ..	1,212	..	1,212
31.	Washermen, Laundrymen and Dhobies ..	1,443	1,531	2,974
32.	Labourers, not classified by occupation ..	419	20	439

Source :—Census of India, 1961, Vol. XI, Mysore, Part II-B (ii), General Economic Tables.

TABLE VII

Livestock Population in Bellary District

A—Cattle and Buffaloes as per Livestock Censuses of 1961 and 1966

Sl. No.	Taluk	Cattle						Buffaloes					
		1961			1966			1961			1966		
		Male	Female	Total	Male	Female	Total	Male	Female	Total	Male	Female	Total
1	2	3	4	5	6	7	8	9	10	11	12	13	14
1.	Bellary ..	28,322	18,622	46,944	21,599	12,863	34,462	2,735	12,328	15,063	1,912	7,526	9,438
2.	Hadagalli ..	29,169	20,791	49,960	26,374	20,171	46,545	1,844	15,485	17,329	2,240	14,610	16,850
3.	Harapanahalli	36,507	29,208	65,715	32,135	27,526	59,661	3,502	22,974	26,476	3,240	23,847	27,087
4.	Hospet ..	3,939	2,651	6,590	24,690	18,854	43,544	255	2,015	2,270	1,988	11,037	13,025
5.	Kudligi ..	47,407	34,392	81,799	43,602	33,668	77,270	4,957	22,930	27,887	3,426	20,129	23,555
6.	Mallapuram	8,671	6,298	14,969	7,458	6,344	13,802	491	3,599	4,090	328	2,719	3,047
7.	Sandur ..	24,609	18,782	43,391	23,279	21,748	45,027	1,576	9,186	10,762	1,327	8,035	9,362
8.	Siruguppa ..	20,886	11,908	32,794	22,114	12,817	34,931	1,850	8,987	10,837	2,386	10,041	12,427
	Total ..	1,99,510	1,42,652	3,42,162	2,01,251	1,53,991	3,55,242	17,210	97,504	1,14,714	16,847	97,944	1,14,791

Table VII—(contd.)

B—Number of other Livestock as ascertained by Livestock Censuses of 1961 and 1966

Sl. No.	Taluk	Sheep		Goats		Horses and Ponies		Mules		Donkeys		Pigs		Camels	
		1961	1966	1961	1966	1961	1966	1961	1966	1961	1966	1961	1966	1961	1966
1.	Bellary ..	19,802	13,275	20,720	13,789	188	218	..	5	671	319	1,606	1,417	..	13
2.	Hadagalli ..	23,036	20,332	13,377	11,927	57	28	4	..	141	107	21	52
3.	Harapanahalli	2,191	2,244	19,879	13,521	98	129	199	51	82	230
4.	Hospet ..	477	13,275	579	13,789	108	393	646	329	184	1,223
5.	Kudligi ..	61,190	65,974	30,266	33,750	60	68	3	..	202	406	192	191
6.	Mallapuram	9,263	6,969	6,744	2,676	5	20	710	..	2	1
7.	Sandur ..	24,485	13,254	4,391	15,002	48	70	..	1	34	126	186	370
8.	Siruguppa ..	14,825	14,054	13,377	12,558	106	164	234	193	1,179	949	29	..
	Total ..	1,55,269	1,49,377	1,09,333	1,17,012	670	1,090	7	6	2,837	1,531	3,452	4,433	29	13

BELLARY DISTRICT

723

Table VII—(contd.)

C—Number of Poultry as per Livestock Census of 1961

Sl. No.	Taluk	Fowls				Ducks				Others	Total Poultry
		Hens	Cocks	Chicken	Total	Ducks	Drakes	Ducklings	Total		
1	2	3	4	5	6	7	8	9	10	11	12
1.	Bellary ..	12,200	3,658	13,900	29,758	37	36	6	79	117	29,954
2.	Hadagalli ..	6,162	1,810	7,629	15,601	1	1	2	4	..	15,605
3.	Harapanahalli ..	9,309	2,396	14,140	25,845	2	2	4	8	..	25,853
4.	Hospet ..	2,304	885	2,687	5,876	20	39	6	65	23	5,964
5.	Kudligi ..	7,507	2,536	11,049	21,092	5	7	2	14	..	21,106
6.	Mallapuram ..	3,460	11,110	3,872	8,242	12	3	..	15	..	8,257
7.	Sandur ..	6,572	1,979	10,509	19,060	7	7	4	18	..	19,078
8.	Siruguppa ..	5,710	1,712	7,564	14,986	5	5	2	12	18	15,016
	Total ..	53,224	28,086	71,150	1,40,460	89	100	26	215	158	1,40,833

Table VII—(concl'd)

C—Number of Poultry as per Livestock Census of 1966

Sl. No.	Taluk	Fowls				Ducks				Others	Total Poultry
		Cocks	Hens	Chicken	Total	Ducks	Drakes	Ducklings	Total		
1	2	3	4	5	6	7	8	9	10	11	12
1.	Bellary ..	4,994	7,955	3,698	16,647	65	6	2	73	..	16,720
2.	Hadagalli ..	1,819	6,689	8,419	16,927	4	10	..	14	..	16,941
3.	Harapanahalli ..	3,241	6,604	15,233	25,078	25,078
4.	Hospet ..	638	1,314	875	2,827	8	3	..	11	..	2,838
5.	Kudligi ..	2,975	8,271	12,382	23,628	2	4	..	6	2	23,636
6.	Mallapuram ..	801	2,376	2,226	5,403	5,403
7.	Sandur ..	2,214	5,186	5,858	13,258	13,258
8.	Siruguppa ..	3,369	6,604	7,691	17,664	150	275	53	478	..	18,142
	Total ..	20,051	44,999	56,382	121,432	229	298	55	582	2	1,22,016

METRIC WEIGHTS AND MEASURES

LENGTH

10 millimetres	=	1 centimetre
100 centimetres	=	1 metre
1,000 metres	=	1 kilometre
1,852 metres	=	1 nautical mile (international)

AREA

100 square millimetres	=	1 square centimetre
10,000 square centimetres	=	1 square metre or centiare
100 square metres	=	1 are
100 ares	=	1 hectare
100 hectares or 1,000,000 square metres	=	1 square kilometre

VOLUME

1,000,000 cubic centimetres	=	1 cubic metre
-----------------------------	---	---------------

CAPACITY

1,000 millilitres	=	1 litre
1,000 litres	=	1 kilolitre

WEIGHTS

1,000 milligrams	=	1 gram
1,000 grams	=	1 kilogram
100 kilograms	=	1 quintal
1,000 kilograms	=	1 tonne
200 milligrams	=	1 carat

Metric weights and their nearest equivalents in F.P.S. System and in the district of Bellary.

Sl. No.	Weights in Metric System (1 kg.—1000 gms.)		Equivalents in F.P.S. System		Equivalents in the District of Bellary		
	Kgs.	Gms.	Lbs.	Ozs.	Mds.	Srs.	Tolas
1	50	..	110	3-5/8	4	18	15
2	20	..	44	1-1/2	1	31	11
3	10	..	22	3/4	1	35	17-1/2
4	5	..	11	3/8	0	17	20-3/4
5	2	..	4	6-1/2	0	7	3-1/2
6	1	..	2	3	0	3	13-3/4
7	..	500	1	1-3/5	0	1	19
8	..	200	0	7	0	0	17
9	..	100	0	3-1/2	0	0	8-1/2
10	..	50	0	1-3/4	0	0	4-1/3
11	..	20	0	7/10	0	0	1-3/4
12	..	10	0	7/20	0	0	17/20
13	..	5	0	7/40	0	0	2/5
14	..	2	0	7/100	0	0	1/6
15	..	1	0	7/200	0	0	1/12

Measures which were in use in Bellary district and their equivalents

	<i>Seer</i>	<i>Pav</i>	<i>Chatak</i>	<i>Seer</i>	<i>Millilitre</i>
2 litres	1	2	1/2	1	1254
1 litre	0	3	1/4	1/2	625
500 ml.	0	1-1/2	1/8	1/4	312
200 ml.	0	1/2	1/2	1/8	156
100 ml.	0	0	1/4	1/16	78
50 ml.	0	0	5/8	1/32	40
20 ml.	0	0	1/4	1/64	20

CONVERSION FACTORS

LENGTH

1 inch	=	2.54 centimetres
1 foot	=	30.48 centimetres
1 yard	=	91.44 centimetres
1 mile	=	1.61 kilometres
1 nautical mile (UK)	=	1,853.18 metres
1 nautical mile (international)	=	1,852 metres

VOLUME

1 cubic foot	=	0.028 cubic metre
--------------	---	-------------------

AREA

1 square foot	=	0.093 square metre
1 square yard	=	0.836 square metre
1 square mile	=	2.59 square kilometres
1 acre	=	0.405 hectare

CAPACITY

1 gallon (Imperial)	=	4.55 litres
1 seer (80 tolas)	=	0.937 litre
1 Madras measure	=	1.77 litres

TEMPERATURE

To Fahrenheit	=	9/5 (To centigrade)+32
---------------	---	------------------------

Denominations of litre measures in use

	2 litres	
20 litres	1 litre	100 ml.
10 litres	500 ml	50 ml
5 litres	200 ml	20 ml

Cylindrical type Aluminium, Brass and Stainless Steel pouring and dipping measures for liquids only.

G.I. Conical measures for kerosene and motor oils only.

1 gallon	=	4.55 litres
1 litre	=	1,000 millilitres

**Weights in existence in Bellary District prior to the introduction
of Metric Weights and their equivalents.**

<i>Tolas</i>	<i>Grams</i>	<i>Tolas</i>	<i>Grams</i>
1-1/2	18	13-1/2	158
3	35	15	175
4-1/2	53	16-1/2	193
6	70	18	210
7-1/2	88	19-1/2	228
9	105	21	245
10-1/2	123	22-1/2	263
12	140	24	280

<i>Seers</i>	<i>Tolas</i>	<i>Kilograms</i>	<i>Grams</i>	<i>Seers</i>	<i>Tolas</i>	<i>Kilograms</i>	<i>Grams</i>
1	24	..	280	21	504	5.88	5,880
2	48	..	560	22	528	6.16	6,160
3	72	..	840	23	552	6.44	6,440
4	96	1.12	1,120	24	576	6.72	6,720
5	120	1.40	1,400	25	600	7.00	7,000
6	144	1.68	1,680	26	624	7.28	7,280
7	168	1.96	1,960	27	648	7.56	7,560
8	192	2.24	2,240	28	672	7.84	7,840
9	216	2.52	2,520	29	696	8.12	8,120
10	240	2.80	2,800	30	720	8.40	8,400
11	264	3.08	3,080	31	744	8.68	8,680
12	288	3.36	3,360	32	768	8.96	8,960
13	312	3.64	3,640	33	792	9.24	9,240
14	336	3.92	3,920	34	816	9.52	9,520
15	360	4.20	4,200	35	840	9.80	9,800
16	384	4.48	4,480	36	864	10.08	10,080
17	408	4.76	4,760	37	888	10.36	10,360
18	432	5.04	5,040	38	912	10.64	10,640
19	456	5.32	5,320	39	936	10.92	10,920
20	480	5.60	5,600	40	960	11.20	11,200

<i>Maunds</i>	<i>Seers</i>	<i>Tolas</i>	<i>Kilograms</i>	<i>Grams</i>
1	40	960	11.2	11,200
2	80	1,920	22.4	22,400
3	120	2,880	33.6	33,600
4	160	3,840	44.8	44,800
5	200	4,800	56.0	56,000
6	240	5,760	67.2	67,200
7	280	6,720	78.4	78,400
8	320	7,680	89.6	89,600
9	360	8,640	100.8	1,00,800
10	400	9,600	112.0	1,12,000

Source :—Office of the Controller of Weights and Measures, Bangalore.

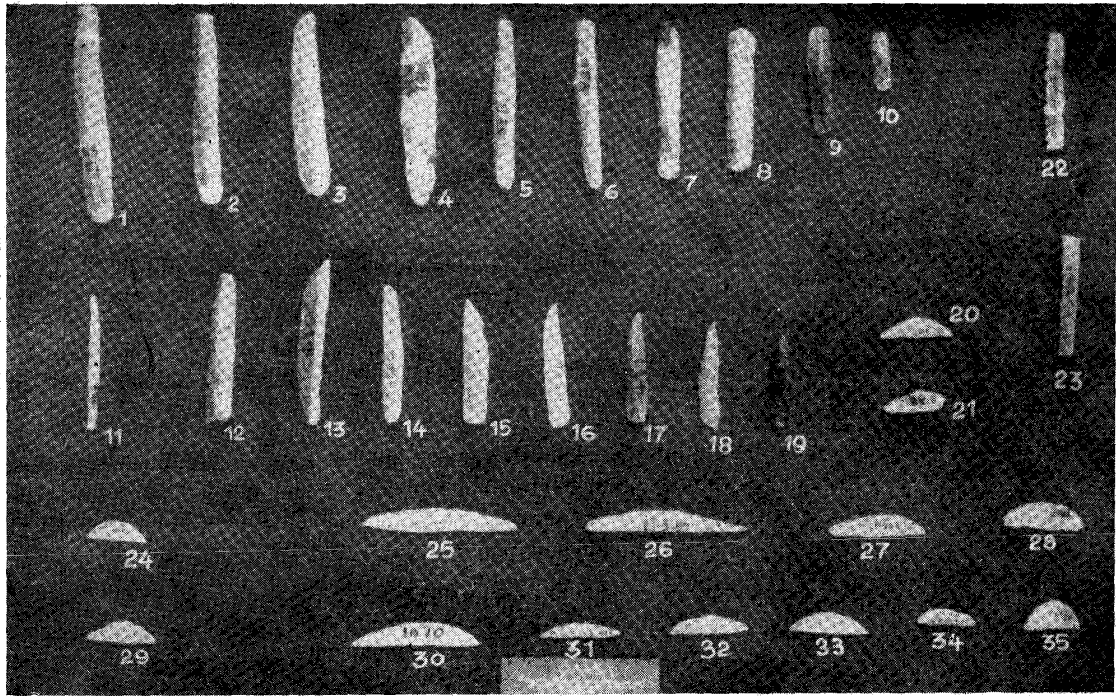
SELECT BIBLIOGRAPHY

- ALTEKAR, A. S. .. The Rashtrakutas and their times, Poona, 1934,
- ANSARI, Z. D. AND .. Excavation at Sanganakallu—1964-65
NAGARAJA RAO, M. S. (Early Neolithic House at Bellary), Poona, 1969.
- BROWN, PERCY .. Indian Architecture, I and II.
- COELHO, WILLIAM .. The Hoysala Vamsa, Bombay, 1949.
- COUSENS, HENRY .. The Chalukyan Architecture of the Kanarese Districts.
- DERRETT, J. D. M. .. The Hoysalas, A Medieval Indian Royal Family, Madras, 1956.
- DESAI, P. B. (Ed.) .. A History of Karnataka (1970), and his papers presented to the Vijayanagara and Hoysala History Seminars held in 1970.
- DEVAKUNJARI, D. .. Hampi, New Delhi, 1970.
- DIWAKAR, R. R. AND .. Karnataka Through the Ages, Bangalore, OTHERS (Eds.) 1968.
- FERGUSON, J. .. A History of Indian and Eastern Architecture.
- FERISHTA .. Translated by Briggs, Calcutta, 1908.
- FLEET .. "Kanarese Dynasties" in Bombay Gazetteer I, Pt. 2.
- FOOTE R. BRUCE .. Indian Pre-historic and Proto-Historic Antiquities, Madras, 1916..
- GOPALA RAO, H. G. .. Soil and Soil Fertility in Mysore State, Bangalore, 1960.
- HALAPPA, G. S. (Ed.) .. A History of Freedom Movement in Karnataka, Vol. II, Bangalore, 1964.
- HALAPPA, G. S. .. Studies in State Administration, Dharwar, 1963.
- HAYAVADANA RAO, C. .. A History of Mysore, Vols. I to III, Bangalore, 1943-46.
- HERAS, FATHER .. The Beginnings of Vijayanagara History, 1934.
- HUKKERIKAR, R. S. AND .. Karnataka Darshana, Bombay, 1955.
OTHERS (Eds.)
- JAVARE GOWDA, D. .. *Nanjunda Kavi*, Mysore, 1964.
- KESHAVA RAO, T. B. .. *Swatantrya Sangrama, Ballary Jille Kanike*, Bellary, 1970.
- KHERA, S. S. .. District Administration in India, Bombay, 1965.
- KRISHNA RAO, M. V. .. The Gangas of Talakad, Madras, 1936.
- KRISHNA RAO, M. V. AND .. *Karnataka Itihasa Darshana*, Bangalore, KESHAVA BHATTA, M. 1970.
- KRISHNASWAMY .. Sources of Vijayanagara History, Madras, AYYANGAR, S. 1919.

- KRISHNASWAMY, S. Y. .. Rural Problems in Madras, Madras, 1947.
- LEARMONTH, A. T. A. .. A Regional Synthesis, Mysore State, Vol. II, Calcutta, 1962.
- LEARMONTH, A. T. A. AND BHAT, L. S. .. An Atlas of Resources of Mysore State, Vol. I, Calcutta, 1961.
- LONGHURST, A. H. .. Hampi Ruins, Calcutta, 1925.
- MAJUMDAR, R. C. AND OTHERS (Eds.) .. The Delhi Sultanate, Bombay, 1960.
- MUJUMDAR, G. G. AND RAJAGURU, S. N. .. Ash-mound Excavations at Kupgal, Poona, 1966.
- MUTHANNA, I. M. .. A History of Karnataka, Mysore, 1962.
- NAGARAJA RAO, M. S. AND MALHOTRA, R. C. .. The Stone Age Hill-Dwellers of Tekkalakota, Poona, 1965.
- NAIDU, D. S. .. Andhra Sathavahanas, Vijayavada, 1970.
- NANDIMATH, S. C. .. *Kannada Nadina Charitre*, Part II, *Karnatakada Dharmagalu*, Bangalore, 1949.
- NANJUNDAPPA, D. M. .. Community Development and Employment, Dharwar, 1964.
- NILAKANTA SASTRI, K. A. .. A History of South India, 1971, Bombay.
- PRAKASA RAO, V. L. S. .. Towns of Mysore State, Calcutta, 1964.
- RAJAPUROHIT, JAITHIRTH AND VIRUPAKSHA GOWDA, K. .. *Pampa Sampada*, Hagaribommanahalli, 1970.
- REA, ALEXANDER .. Chalukyan Architecture.
- SALETORRE, B. A. AND DESAI, P. B. .. *Kannada Nadina Charitre*, Part I, Bangalore, 1941.
- SANKALIA, H. D. .. Mesolithic and Pre-mesolithic Industries from the excavations at Sanganakallu, Bellary, 1965, Poona, 1969.
- SEWELL, ROBERT .. A Forgotten Empire (reprint), New Delhi, 1962.
- SHARMA, L. T. AND SRIDHAR, B. H. .. *Banavasiya Kadambaru*, Banavasi, 1966.
- SHERWANI, H. K. .. Bahmanis of the Deccan, Hyderabad, 1953.
- SHIVAMURTHY SHASTRY, B. .. *Karnataka Sandarshana*, Bangalore, 1962.
- SRIKANTHA SHASTRY, S. .. Sources of Karnataka History—I, Mysore, 1940.
- SRIKANTIAH, S. .. The Founders of Vijayanagara.
- SURYANARAYANA RAO, B. .. A Never-to-be-Forgotten Empire.
- THIPPERUDRASWAMY, H. .. *Karnataka Samskriti Sameekshe*, Mysore, 1968.
- THURSTON, EDGAR .. Castes and Tribes of South India.
- VENKATESHWARAN, P. A. .. Agriculture in South India, New Delhi, 1961.

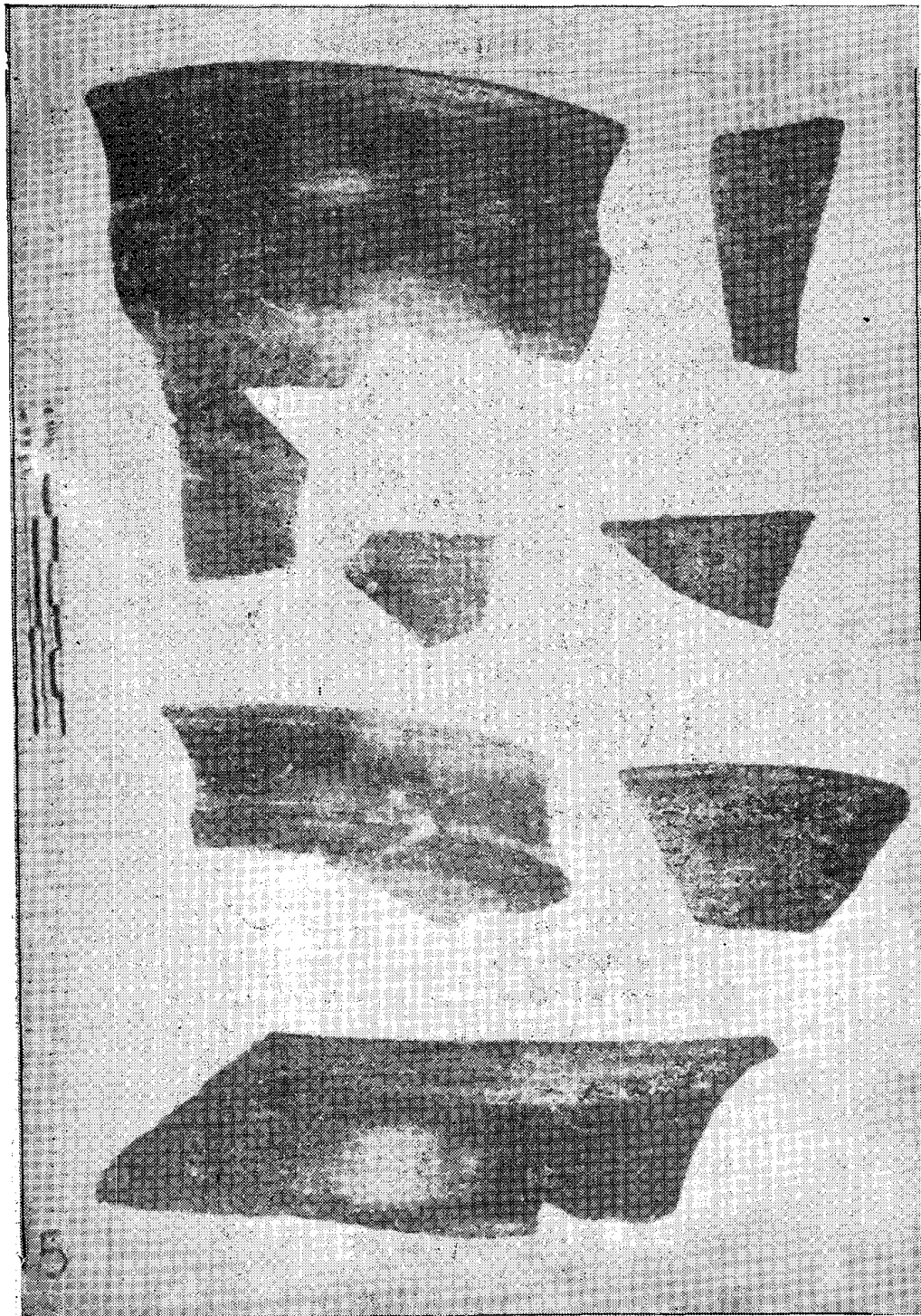
- Archaeological Survey of India Reports, 1907-08, 1908-09 and 1911-12.
 Bellary, Souvenir, Canara Industrial and Banking Syndicate, 1960.
 Brochure on Motor Vehicles Department, Bureau of Economics and
 Statistics, Bangalore, 1970.
 Census Hand-Books, Bellary District, 1951 and 1961.
 Census of Government Employees as on 31st March 1957, 1962, 1965
 and 1968, Bureau of Economics and Statistics, Bangalore.
 Census of India, Mysore State, 1961, General Population Tables.
 Census of India, 1961, Vol. XI, Mysore, Part II-B, General Economic
 Tables, Delhi, 1965.
 Census of India, 1961, Vol. XI, Part VI, Village Survey Monograph,
 No. 21, Holalu Village, Bellary District, 1964.
 Census of India, 1971, Population of Villages and Towns, Bellary
 District, Bangalore, 1972.
 Census of Irrigation Wells in Mysore State, 1968-69, Bureau of Econo-
 mics and Statistics, Bangalore, 1970.
 Economic Development of Mysore, 1956-1969, Bureau of Economics
 and Statistics, 1970.
 Economic Situation in Mysore (Review of Economic Conditions in
 Mysore State), Department of Statistics, 1961.
 Epigraphia Carnatica—IV, V, VI, VII, VIII and XI.
 Epigraphia Indica—XVIII and XXI.
 Export Potential Survey of Mysore State, Bangalore, 1970.
 First, Second and Third Five-Year Plans, Mysore State.
 Fourth Five-Year Plan (1969-74), Mysore State, Policy and Programme,
 1970.
 Hand-Book on Industries, Bellary District, 1962.
 Housing in Mysore, Mysore Housing Board, 1971.
 Indian Antiquary, Vol. XLVIII.
 Inter-District and Inter-State Income Differentials, 1955-56,
 National Council of Applied Economic Research, New Delhi, 1963.
 Key Indicators, Mysore State, Department of Statistics, 1960.
 Livestock Census, Mysore State, 1961 and 1966.
 Madras District Gazetteers, Bellary District, 1904.
 Madras District Gazetteers, Bellary District, Vol. II, 1930.
Mysooru Rajya, Department of Information, 1956.
 Mysore, 1969-70, An Economic Review, Bureau of Economics and
 Statistics, Bangalore, 1971.
 Mysore, 1970-71, An Economic Review, Bangalore, 1972.
 Mysore Archaeological Reports—1935, 1936 and 1942.
 Mysore State in Maps, Department of Statistics, 1959 and 1966.
 Preliminary Report on Intensive Educational District Development
 Project, Bellary, 1970.
 Quarterly Bulletins of Statistics, Mysore, Department of Statistics,
 Bangalore.

- Report of the Lead Bank Survey, Bellary District, Manipal, South Kanara, 1970.
- Report of the Mysore Tenancy Agricultural Land Laws Committee, 1958.
- Reports of the Mysore State Adult Education Council for 1960-61 and 1970-71.
- Revision Settlement Reports, 1964.
- Road Statistics in Mysore State (P.W.D.), 1970, Parts I & II.
- Sample Survey of Road Traffic conducted in 1969-70 in Mysore State.
- Sandur-1948, Sandur State Government, 1948.
- Selected Papers—Vols. II and III, Bureau of Economics and Statistics, Bangalore, 1969 (stencilled papers).
- South Indian Inscriptions, Vol. IX, Part I.
- Souvenir, Bellary District-Level Seminar, Bellary, 1961.
- State Income Estimates of Mysore State, 1956-57 to 1968-69, Bureau of Economics and Statistics, 1970.
- State-Level Seminar on Economic Development and Social Change in Mysore State, Department of Economics, Karnatak University, Dharwar, 1970 (stencilled papers).
- Statistical Abstracts of Mysore, Bureau of Economics and Statistics, 1967-68 and 1970-71.
- Statistical Outline of Community Development Programme in Mysore State, 1961.
- Statistical Outline of Mysore, Department of Statistics, 1960.
- Techno-Economic Survey of Mysore, National Council of Applied Economic Research, New Delhi, 1965.
- The Third Five-Year Plan for Bellary District, 1963.
- Town Planning in Mysore State, Department of Town Planning, 1970.
- Vijayanagara Sixcentenary Commemoration Volume, Dharwar, 1936.
- “Welcome Bellary” Souvenir, Bangalore, 1953.
-



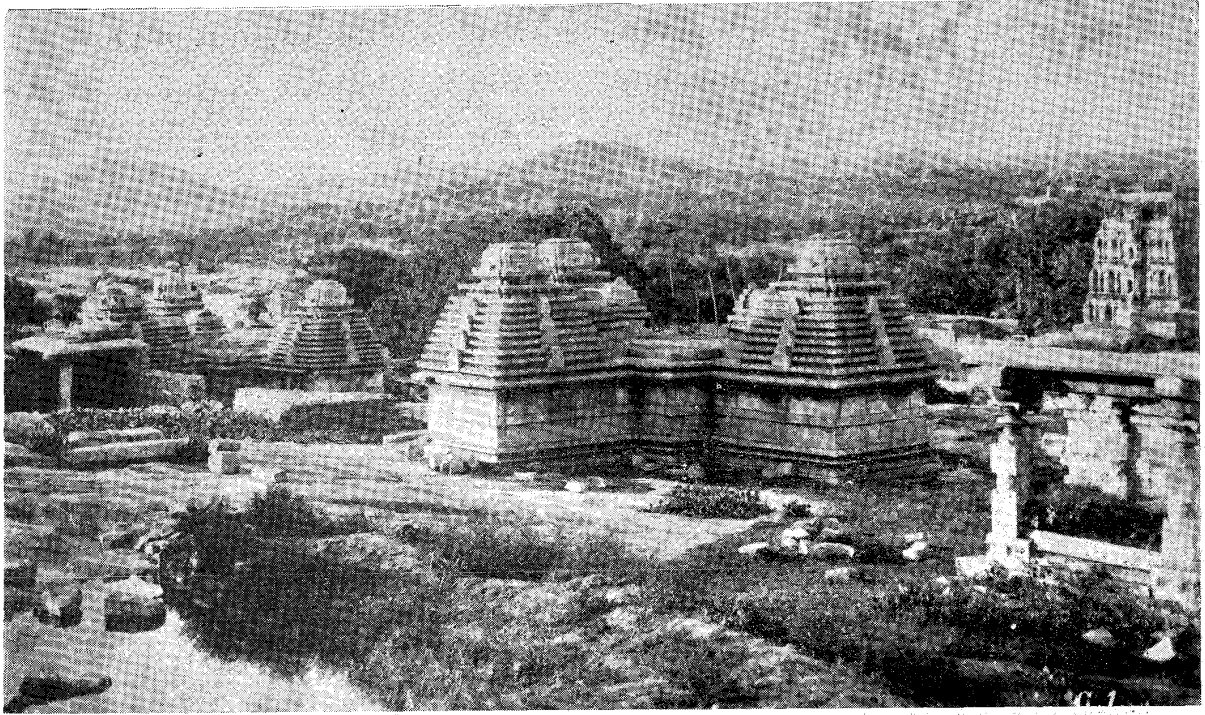
Parallel-sided blades, lunates, saw-blades, etc., of stone age, excavated at Tekkalakota, a place of high archaeological importance in Siruguppa taluk. The Bellary area was one of the main centres of early food-producing stone-age cultures.

(By courtesy of the Deccan College Post-graduate and Research Institute, Poona)



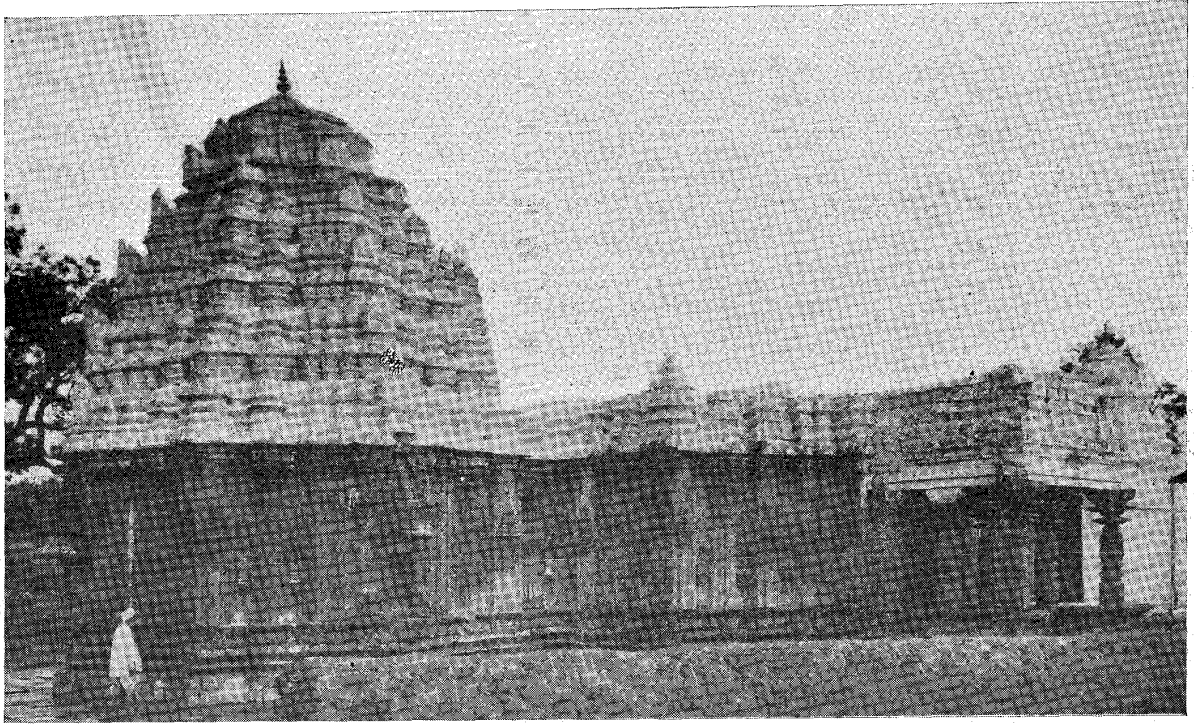
**Neolithic and megalithic pottery recovered from Sanganakallu in Bellary taluk,
another pre-historic settlement of significance.**

(By courtesy of the Deccan College Post-graduate and Research Institute, Poona)



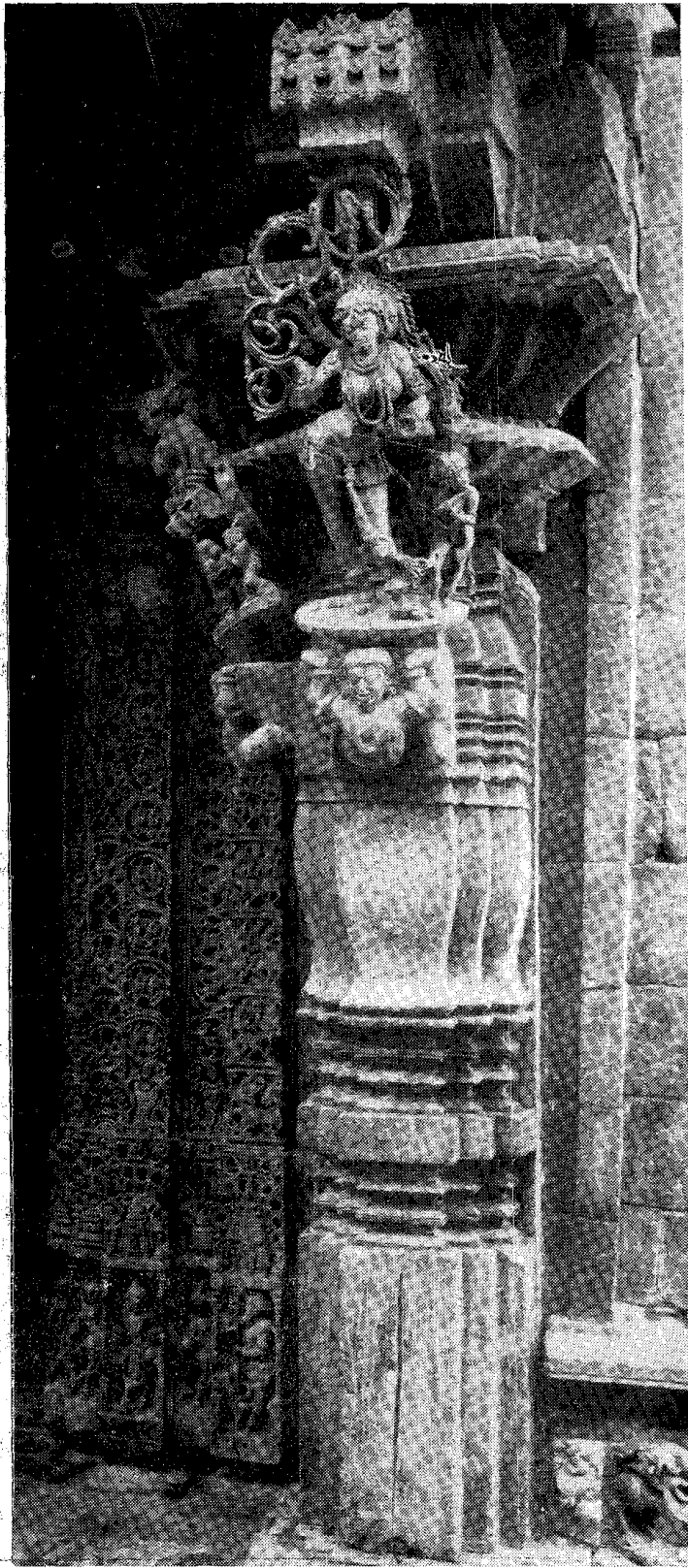
The Hemakuta group of temples of the pre-Vijayanagara period at Hampi. They are mostly of *trikutachala* design and face north. Their super-structures are of the stepped pyramidal Kadamba pattern.

(Copyright—Archaeological Survey of India)



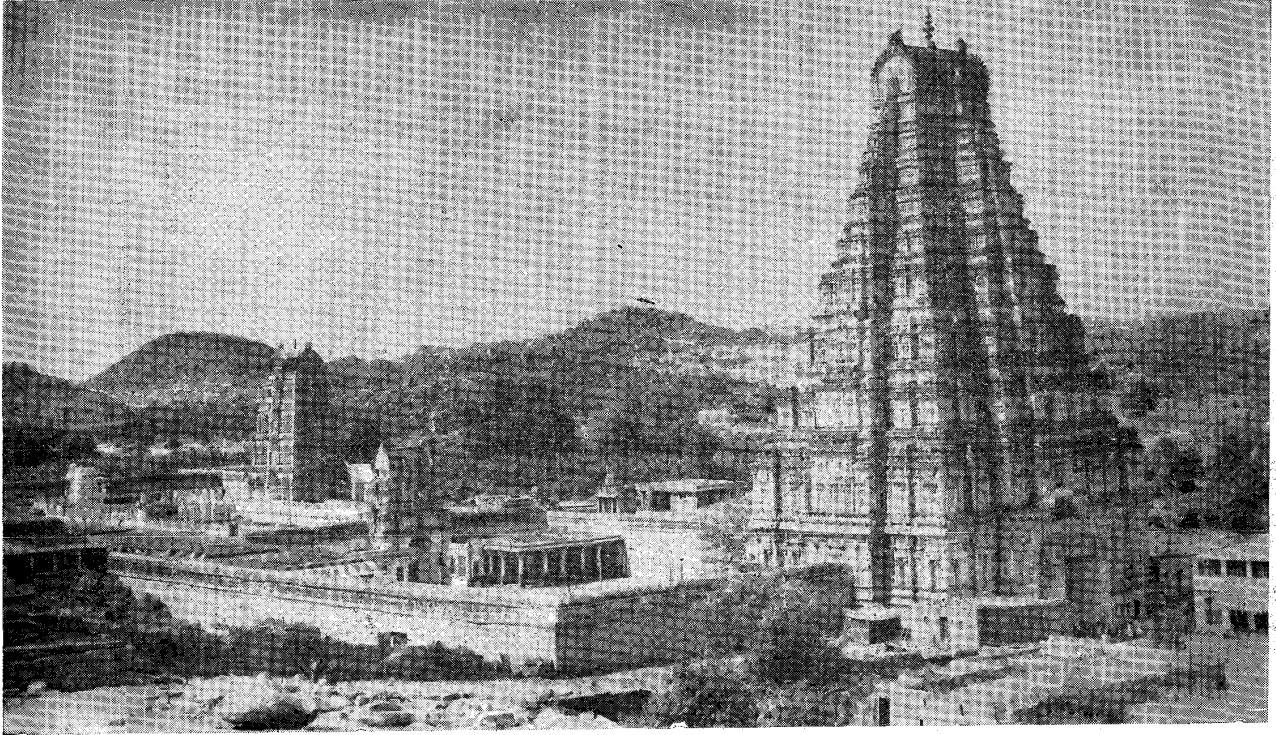
A south-west view of the Mallikarjuna temple built in the Chalukyan style at Kuruvatti in Hadagalli taluk.

(Copyright—Archaeological Survey of India)

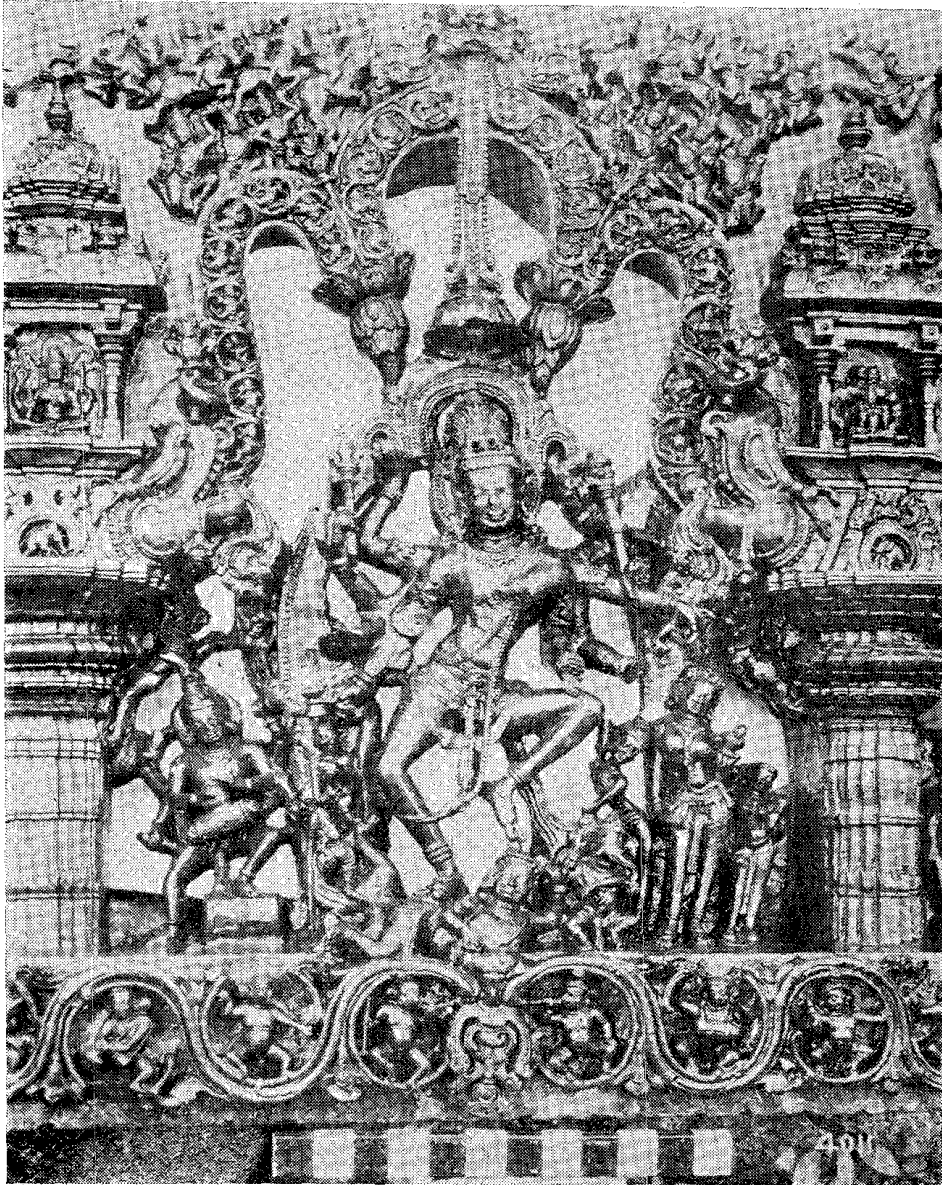


A bracket figure at the main entrance (north wing) of the Mallikarjuna temple at Kuruvatti in Hadagalli-taluk.

(Copyright—Archaeological Survey of India)



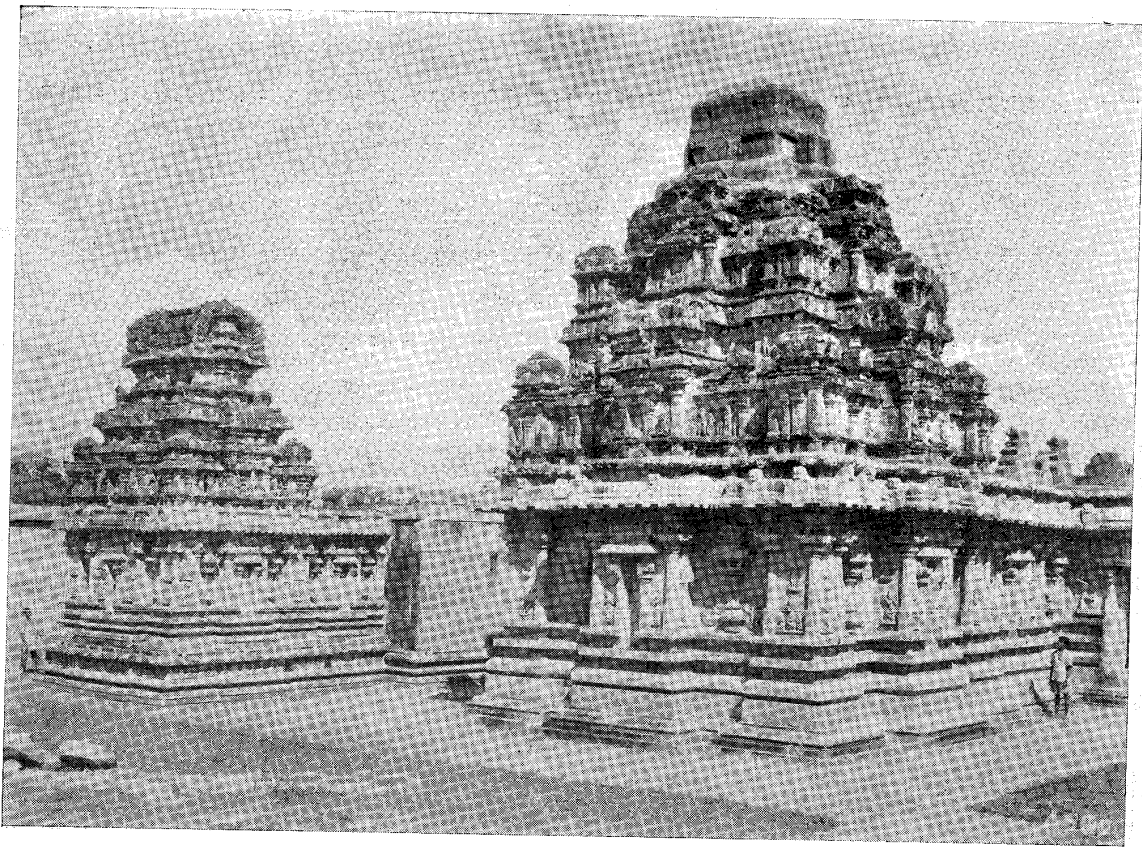
A panoramic view of the Virupaksha (Pampapati) temple at Hampi.



A door-lintel with carvings of Nataraja, recently excavated at the Hampi ruins.

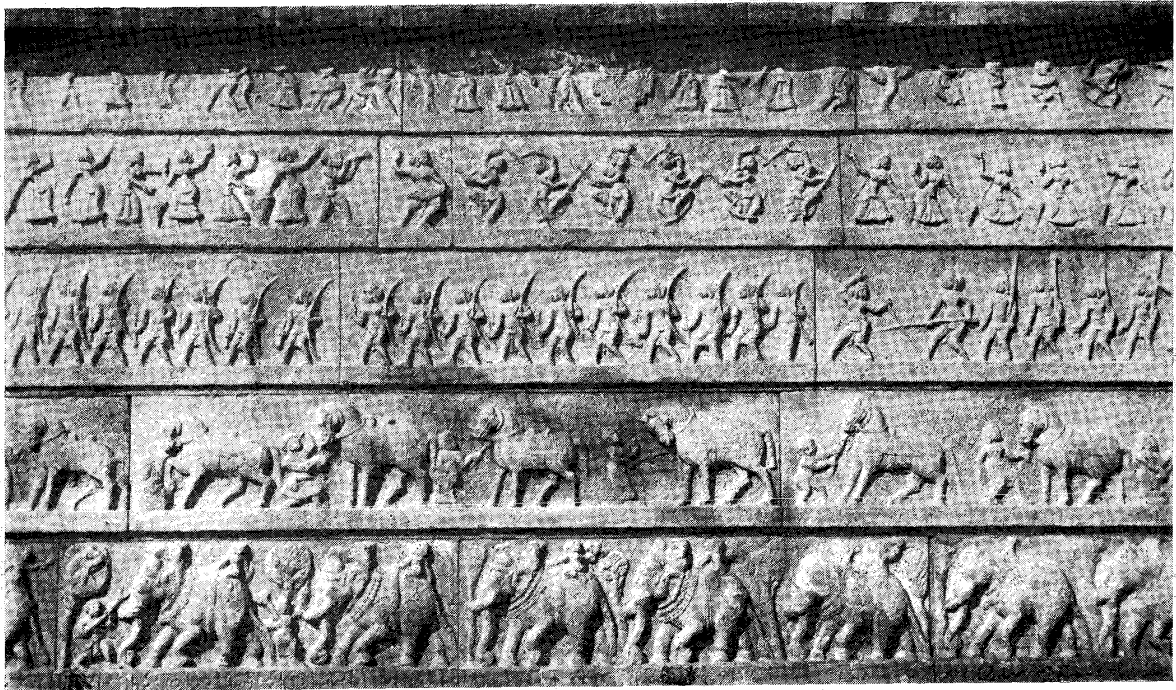
This is a Hoysala workmanship of the 14th Century A.D.

(Copyright — Archaeological Survey of India)



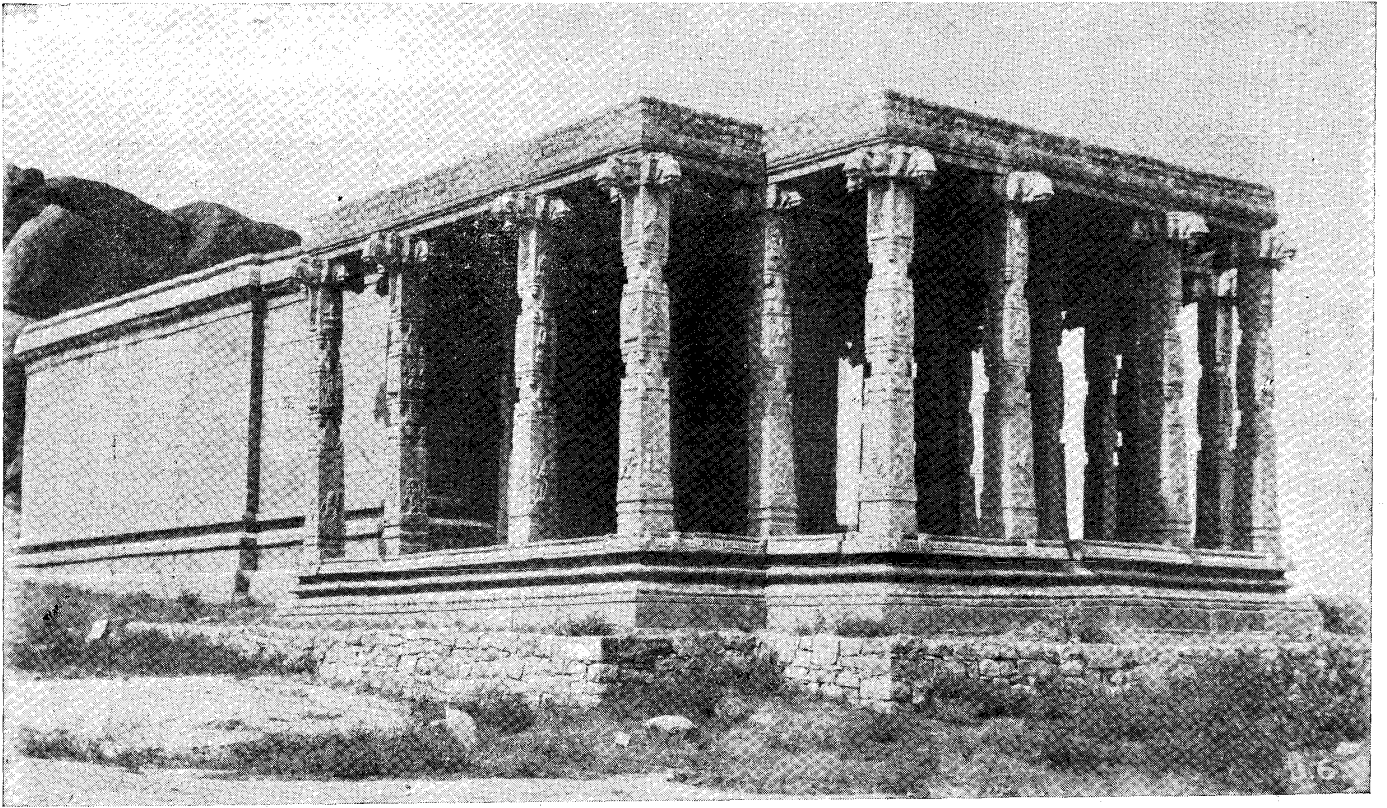
A south-west view of the Hazara Ramaswami temple at Hampi.

(Copyright—Archaeological Survey of India)

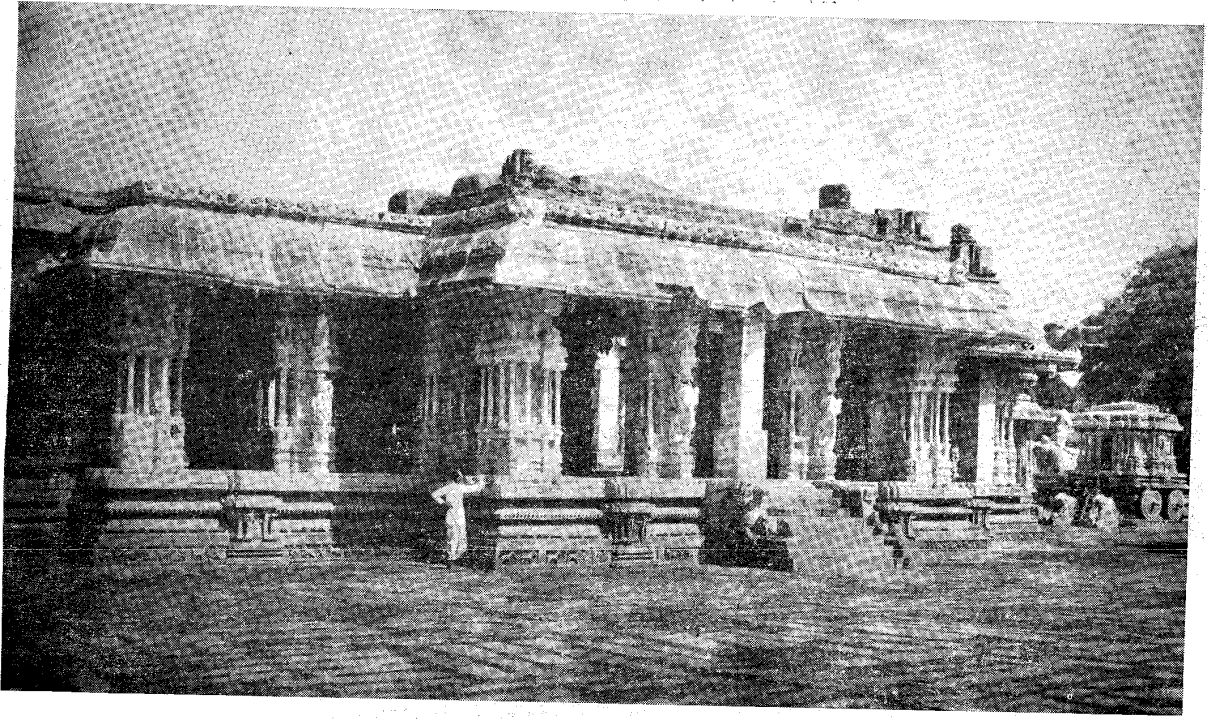


Carvings of elephants, horses, warriors and dancing girls on the outer wall of the Hazara Ramaswami temple at Hampi.

(Copyright—Archaeological Survey of India)

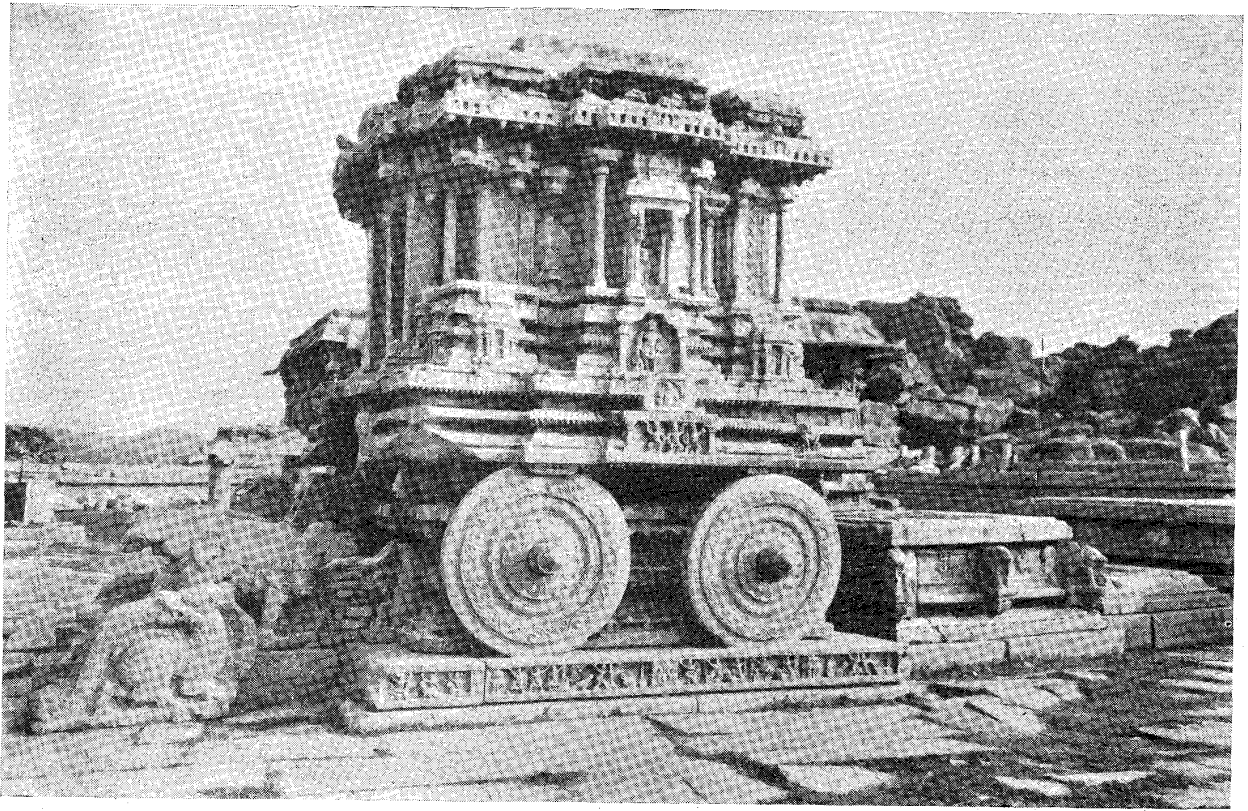


A south-east view of the Kadalekalu Ganesha temple at Hampi.
(Copyright—Archaeological Survey of India)



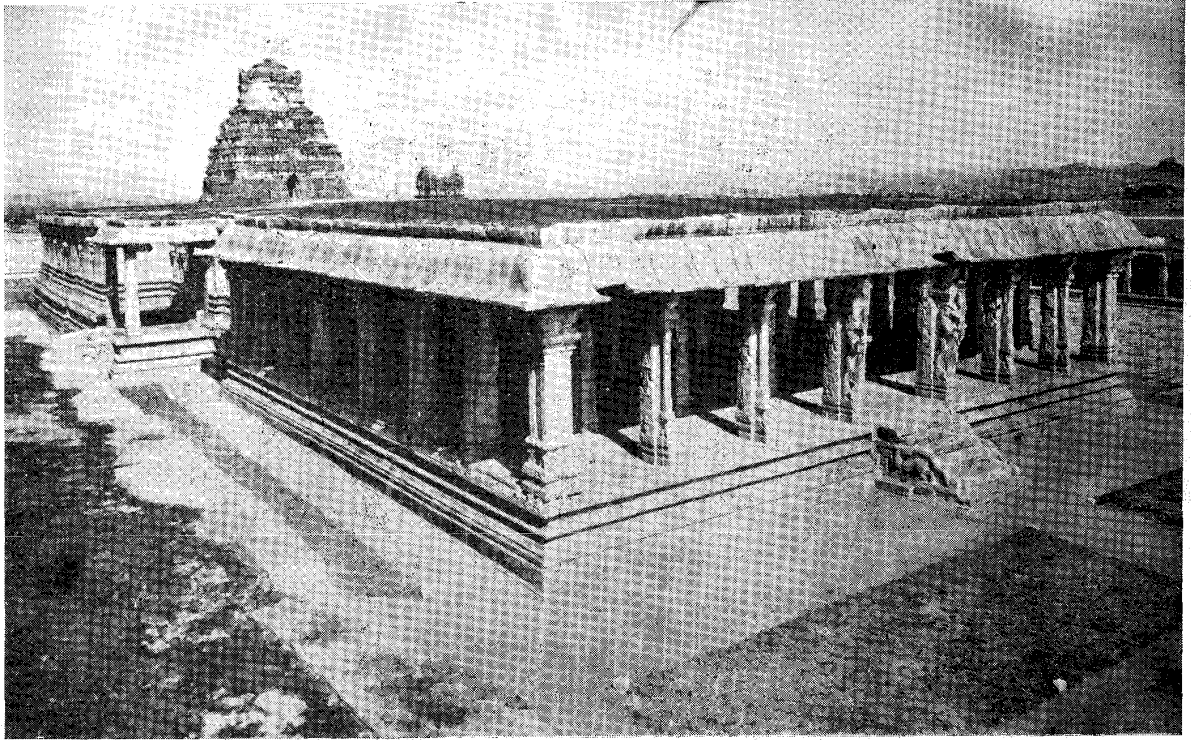
A general view of the front *mantapa* of the Vijaya-Vitthalaswami temple at Hampi.

(Copyright—Archaeological Survey of India)



Stone chariot at the Vijaya-Vitthalaswami temple at Hampi.

(Copyright—Archaeological Survey of India)

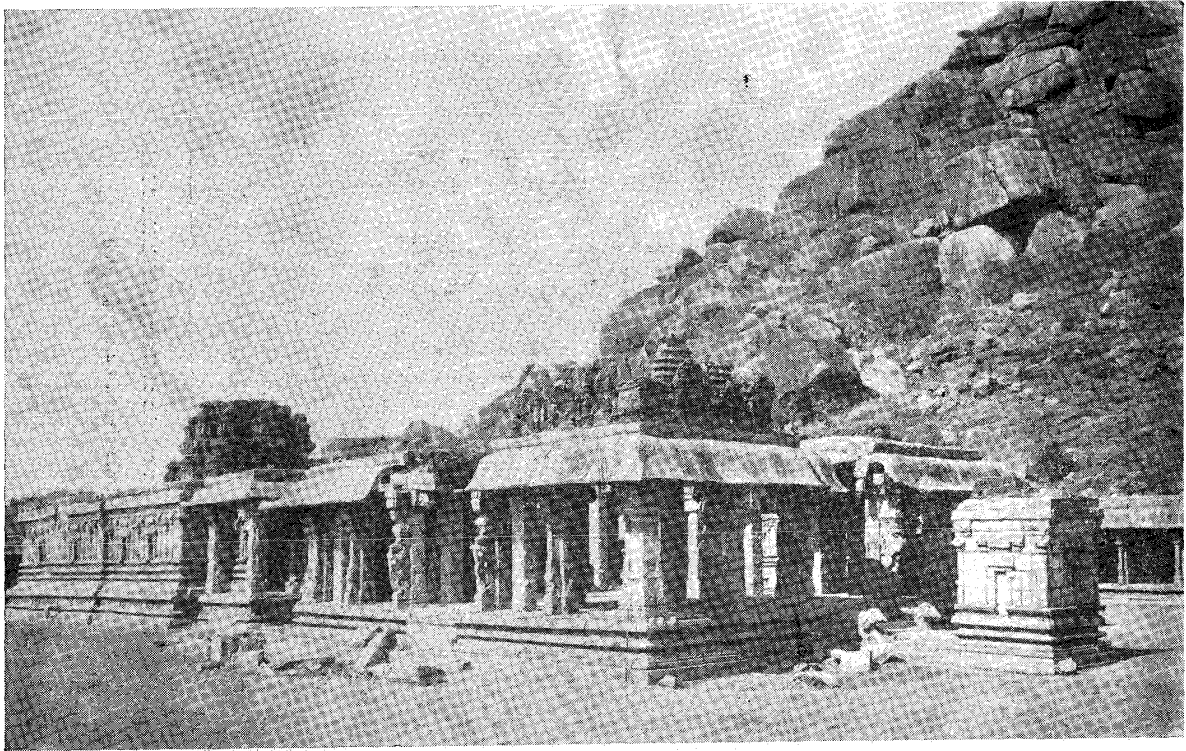


The Pattabhirama temple at Hampi.
(Copyright—Archaeological Survey of India)



Monolithic colossus of Ugra-Narasimha at Hampi, which is 22 feet high.

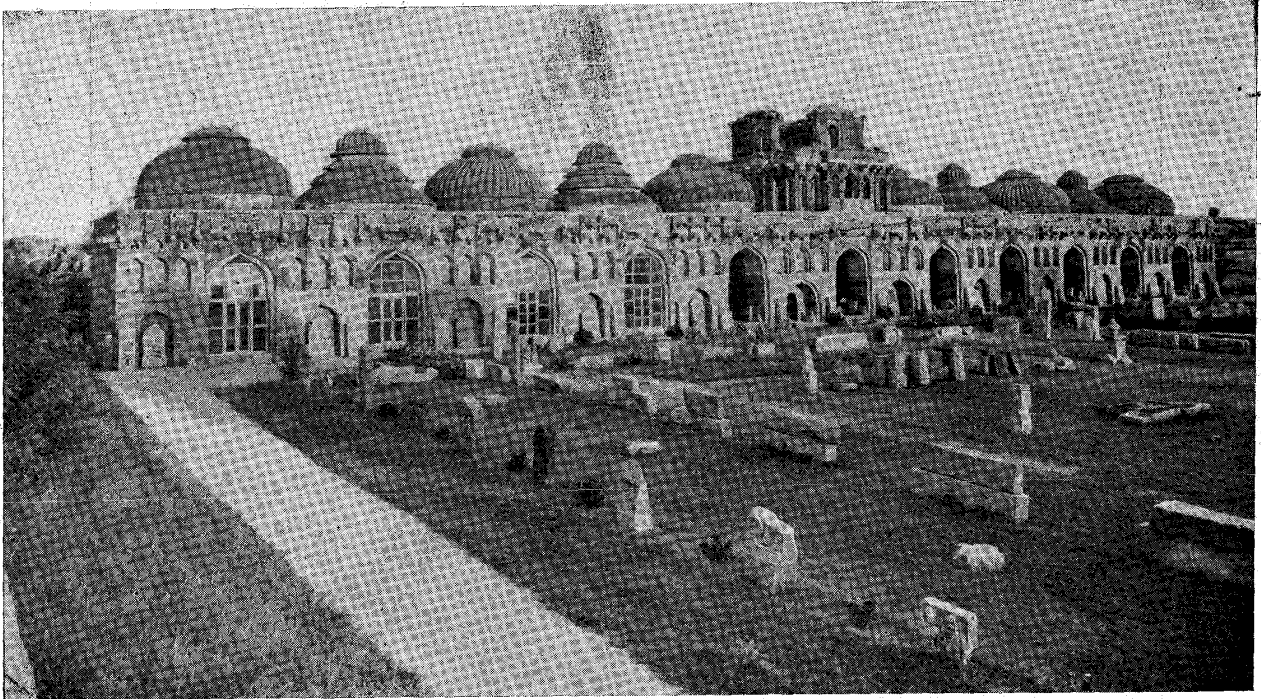
(Copyright—Archaeological Survey of India)



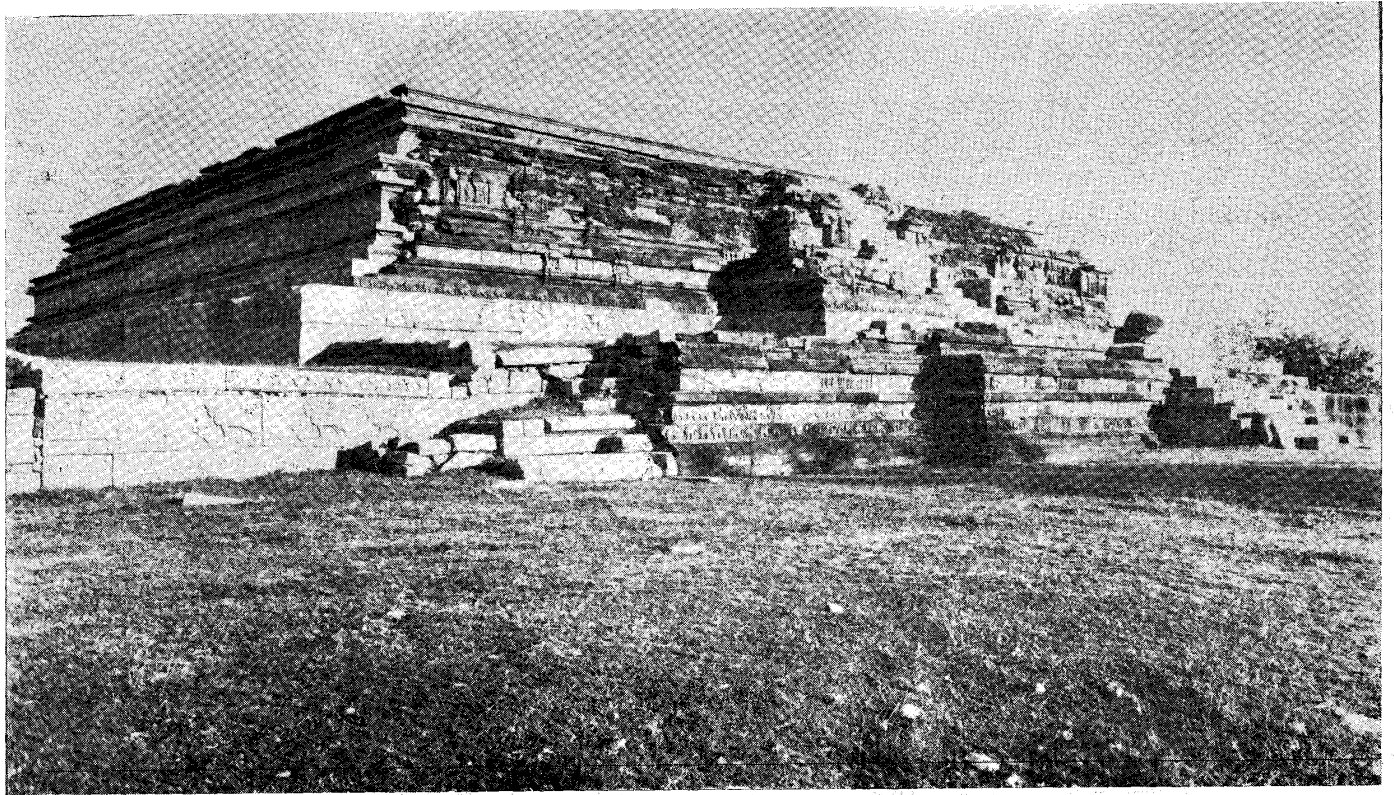
The Achyuta Raya temple at Hampi.
(Copyright—Archaeological Survey of India)



The Lotus Mahal at Hampi.
(Copyright—Archaeological Survey of India)



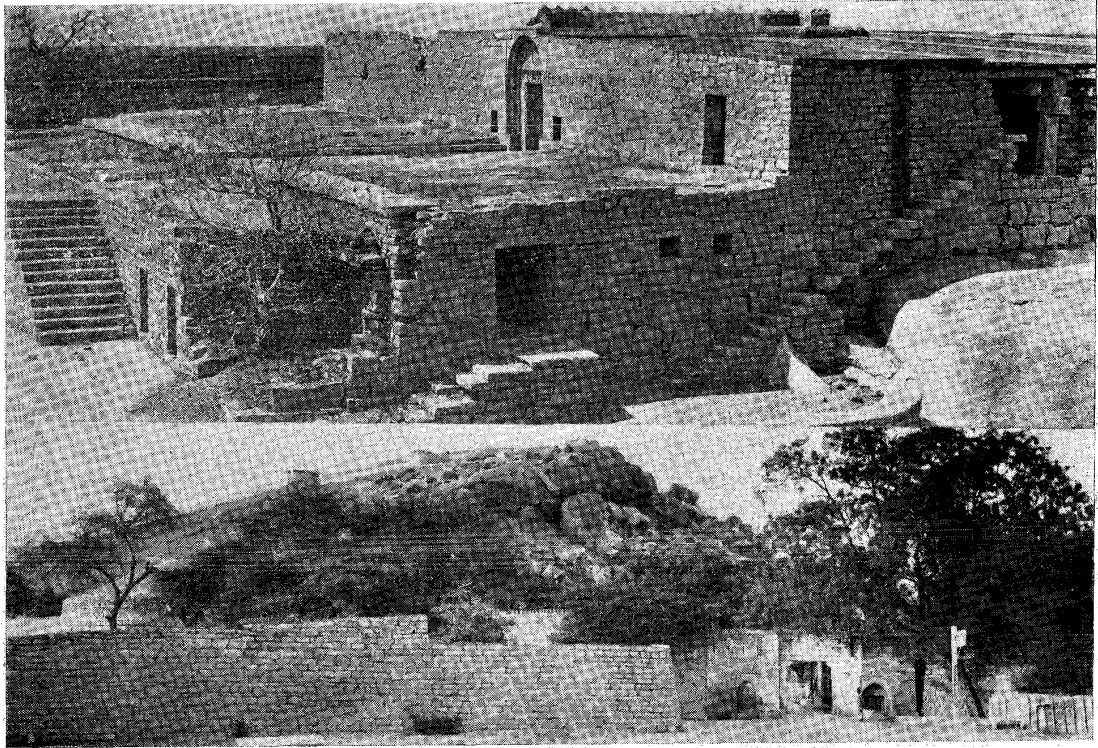
The Elephants' Stables at Hampi.
(Copyright—Archaeological Survey of India)



The Throne Platform at Hampi. This is a massive stone basement, popularly known as the *Mahanavami-dibba* or *Dasara-dibba*.
(Copyright—Archaeological Survey of India)

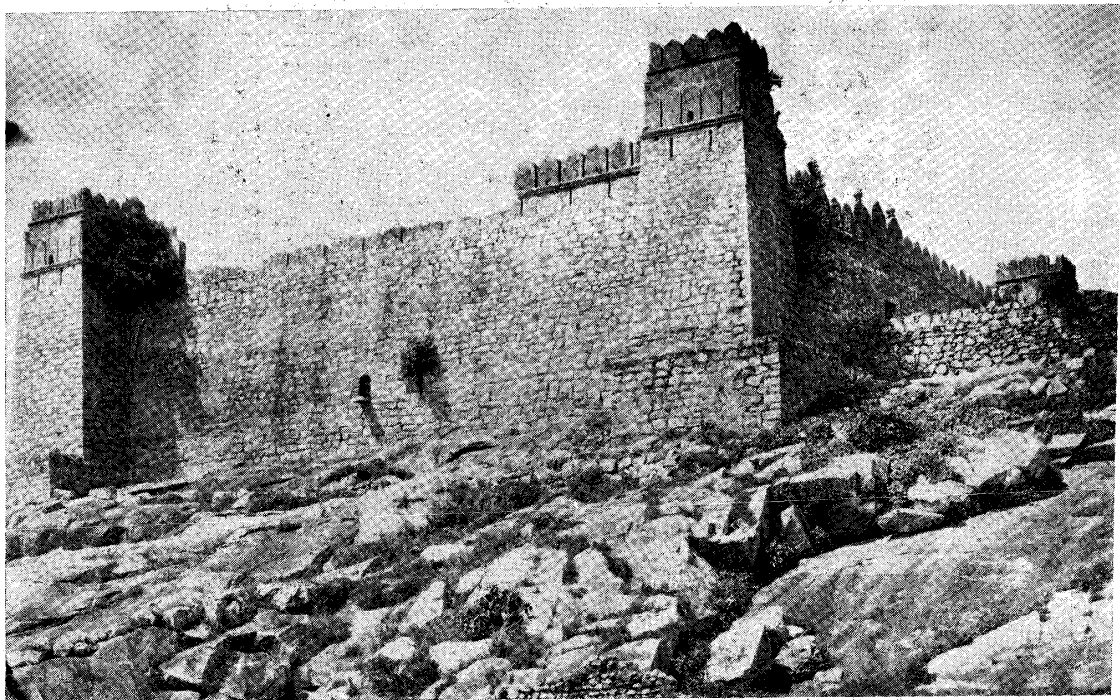


Sculpture on a side of the Throne Platform at Hampi.
(Copyright—Archaeological Survey of India)



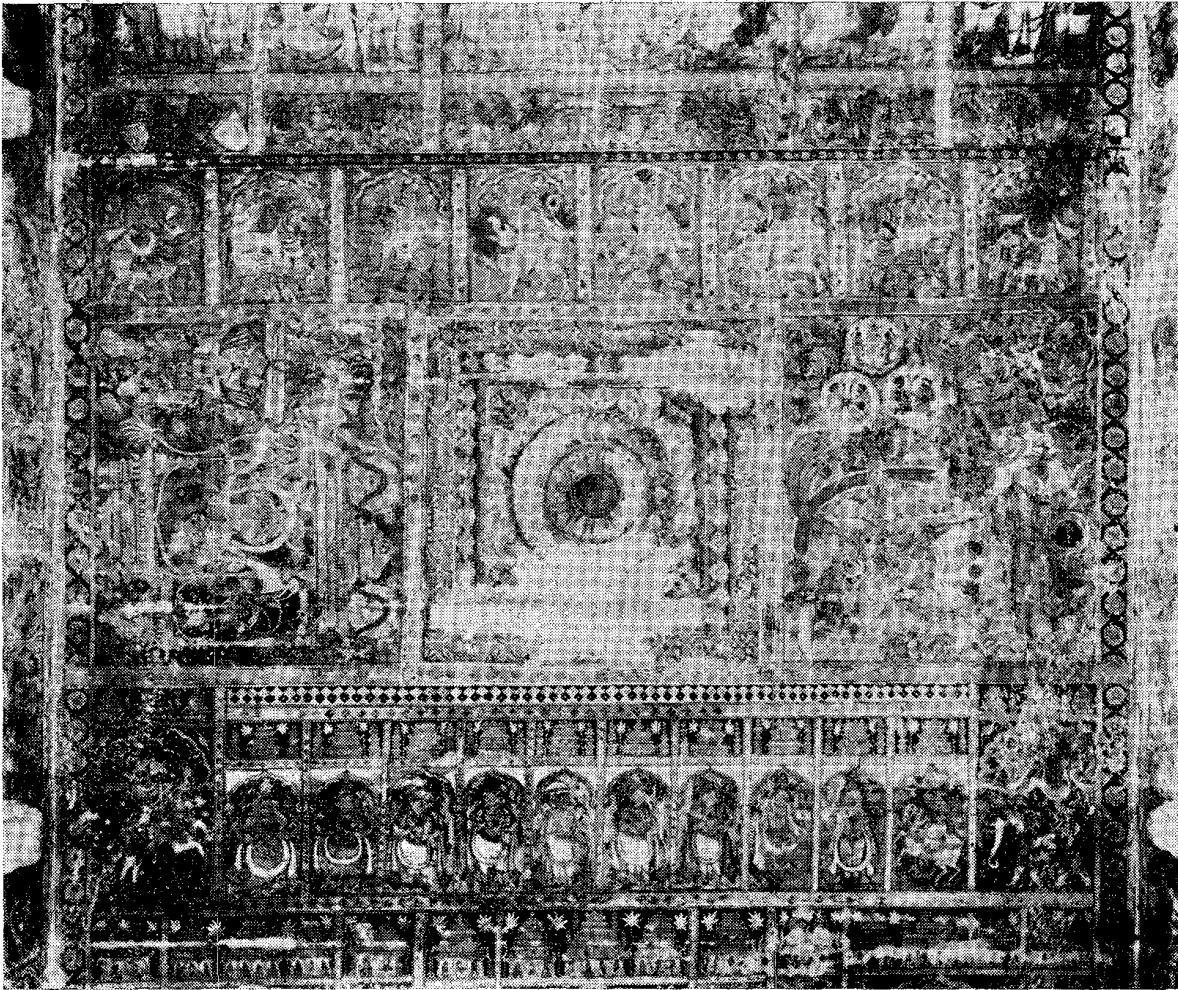
A general view of the Fort at Bellary with its southern lower gateway.

(Copyright—Archaeological Survey of India)



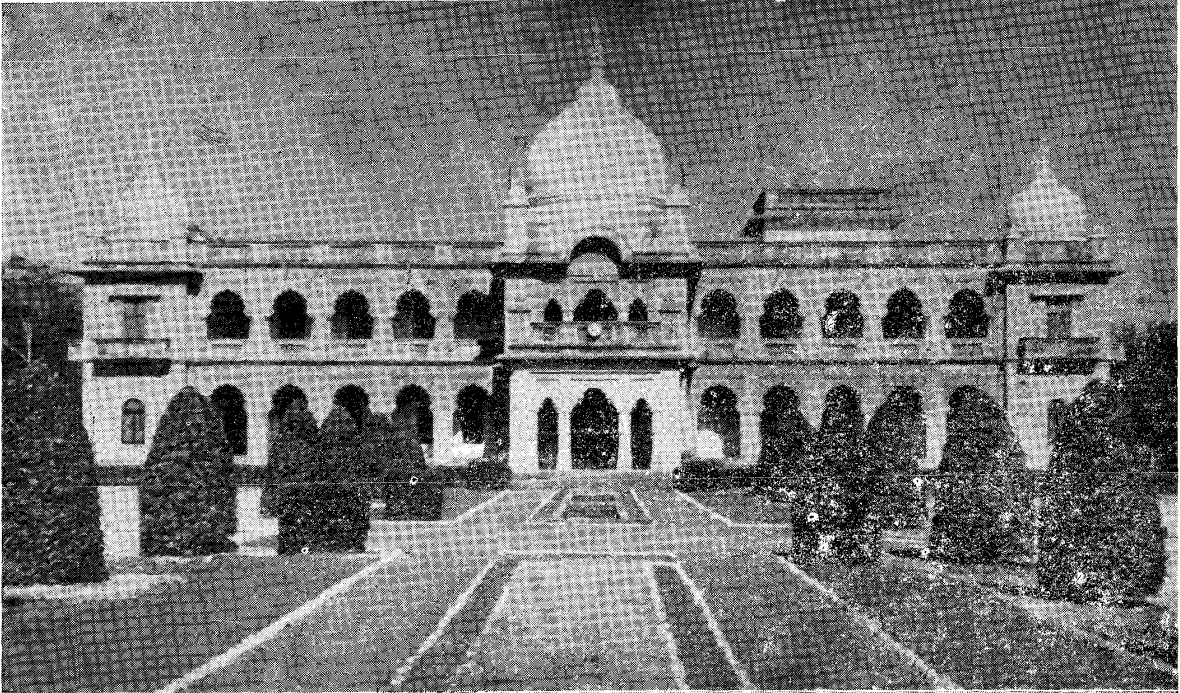
A south-east view of the ruined palace on the top of the Uchchangidurga hill in Harapanahalli taluk.

(Copyright—Archaeological Survey of India)



A painted ceiling of *mahamantapa* of the Virupaksha temple at Hampi, showing *Ashta-Dikpalakas* above, *Dashavatara* below, Arjuna shooting, *Kama-Dahana* on left and Shiva destroying Tripura on right.

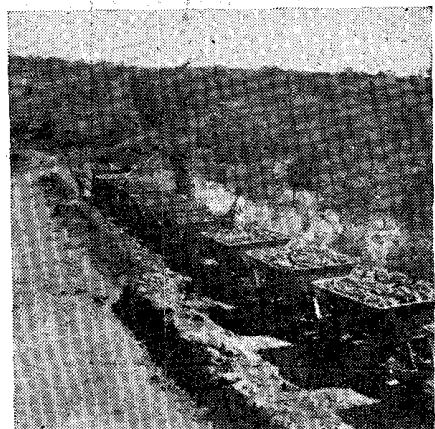
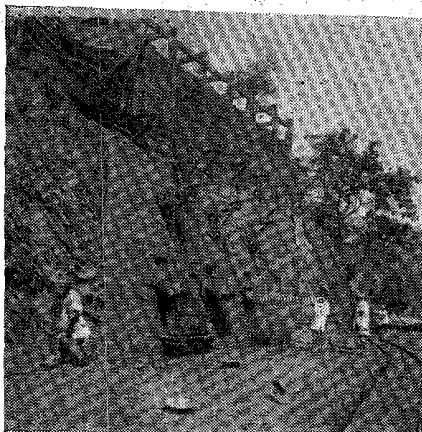
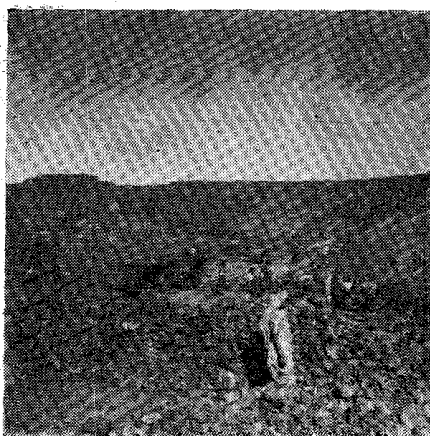
(Copyright—Archaeological Survey of India)



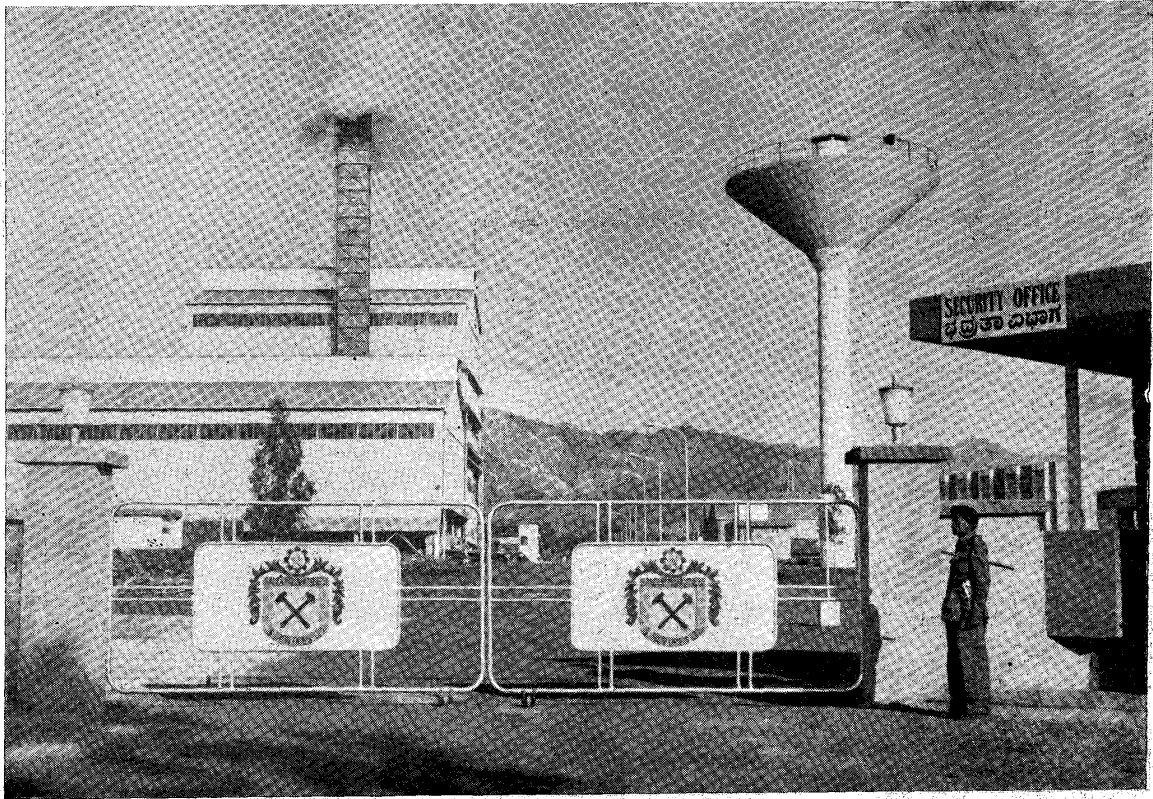
A front view of the Raja's Palace, a modern structure, at Sandur.



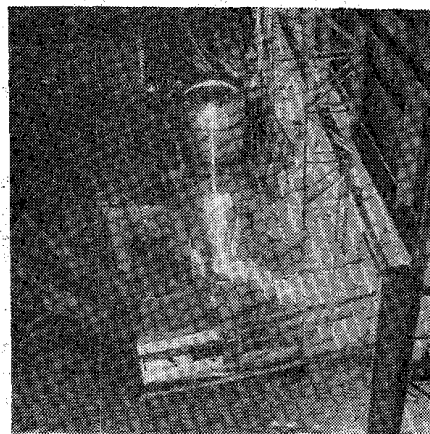
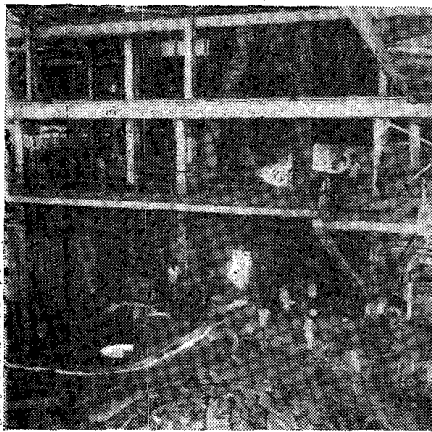
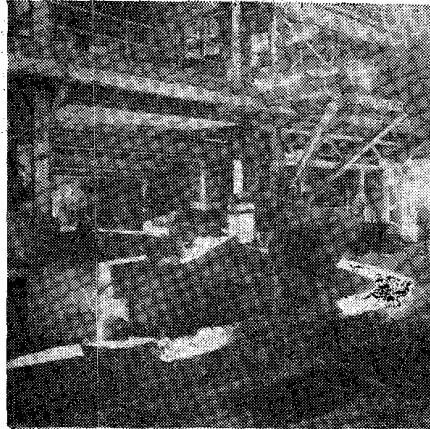
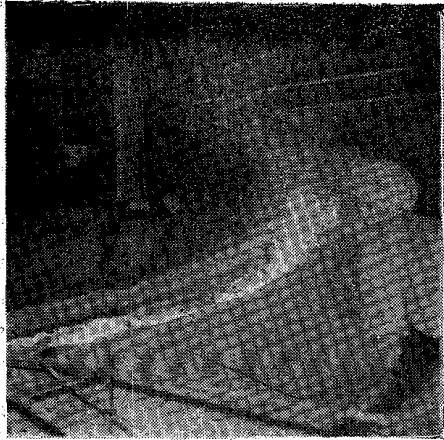
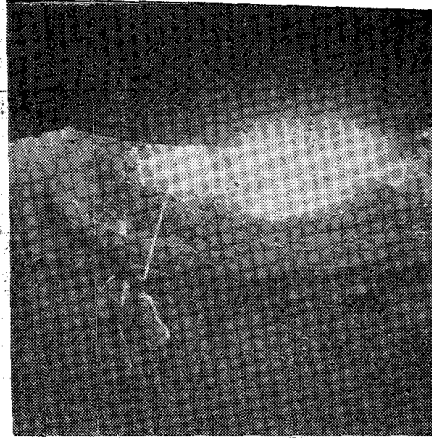
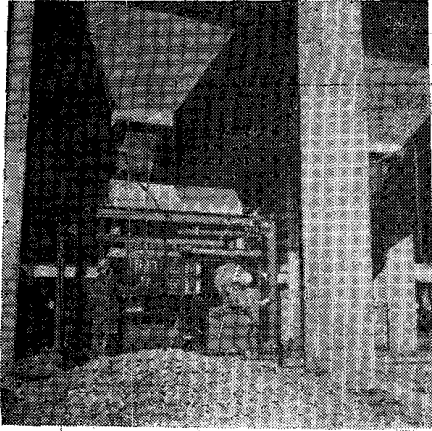
A fine view of the "Vaikuntha" Guest House at the Tungabhadra Dam, with its delightful lawns in the front.



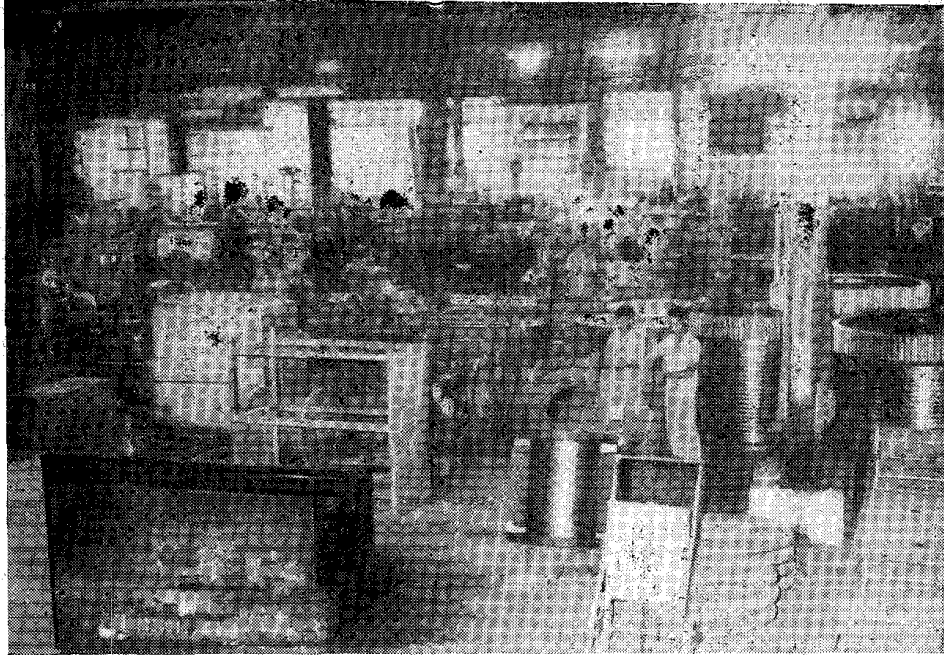
Mining field operations in a mine of the Sandur Manganese and Iron Ores, Ltd.



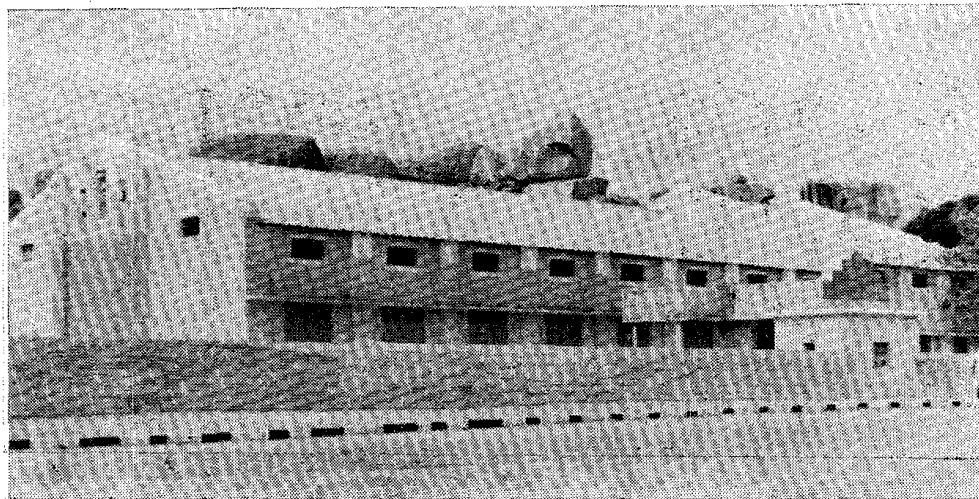
An exterior view of the Metal and Ferro Alloys Plant of the Sandur Manganese and Iron Ores, Ltd., at Vyasnakere in Hospet taluk.



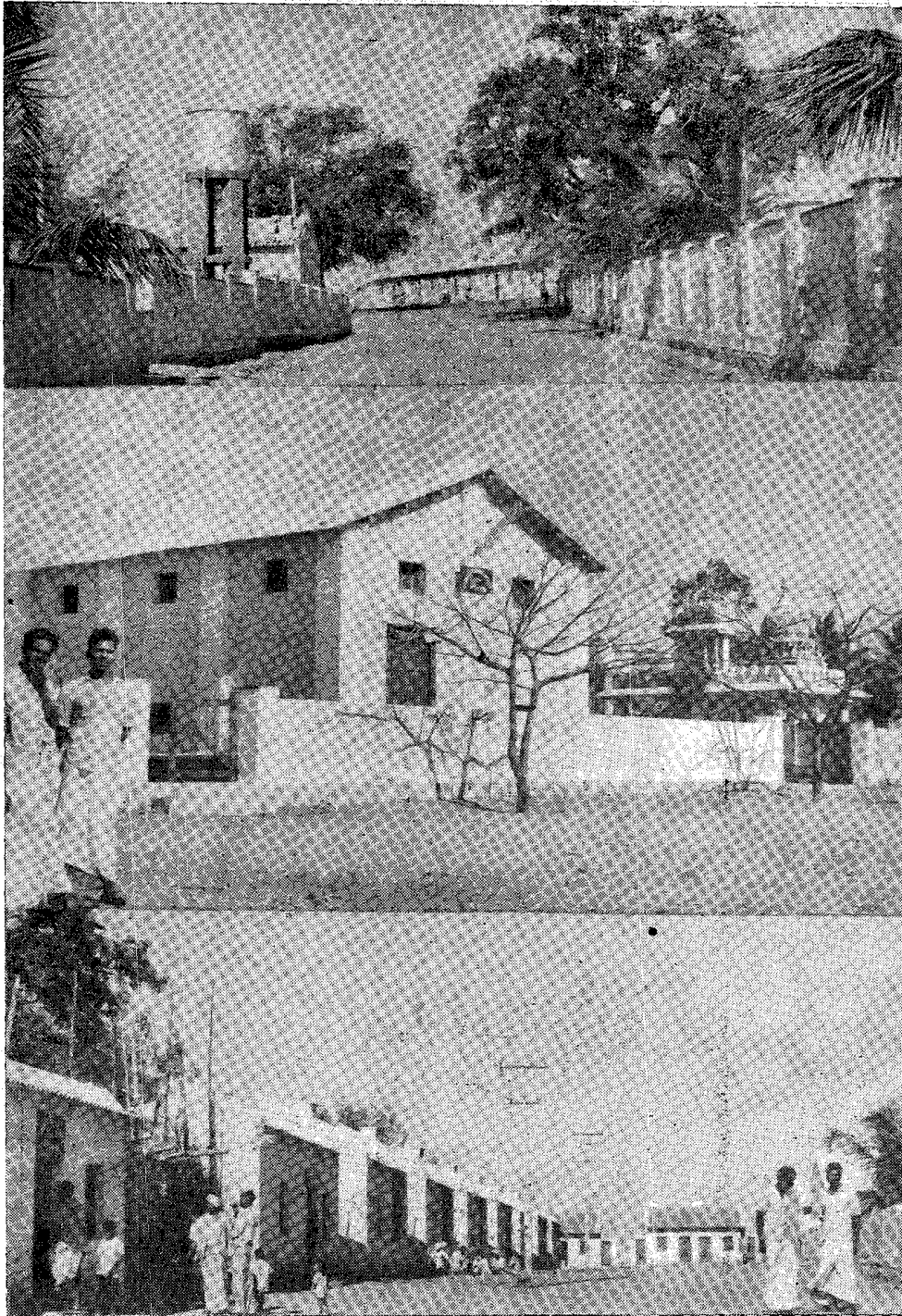
Inside views of the Metal and Ferro Alloys Plant of the Sandur Manganese and Iron Ores Ltd., at Vysanakere near Hospet.



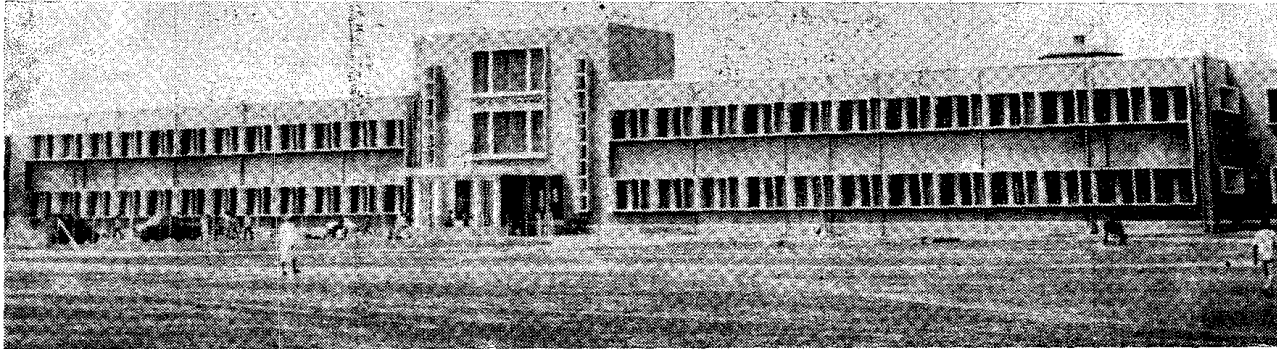
An inside view of the Tungabhadra Steel Products at the Tungabhadra Dam.



The Raghava Kala Mandir in Bellary City.



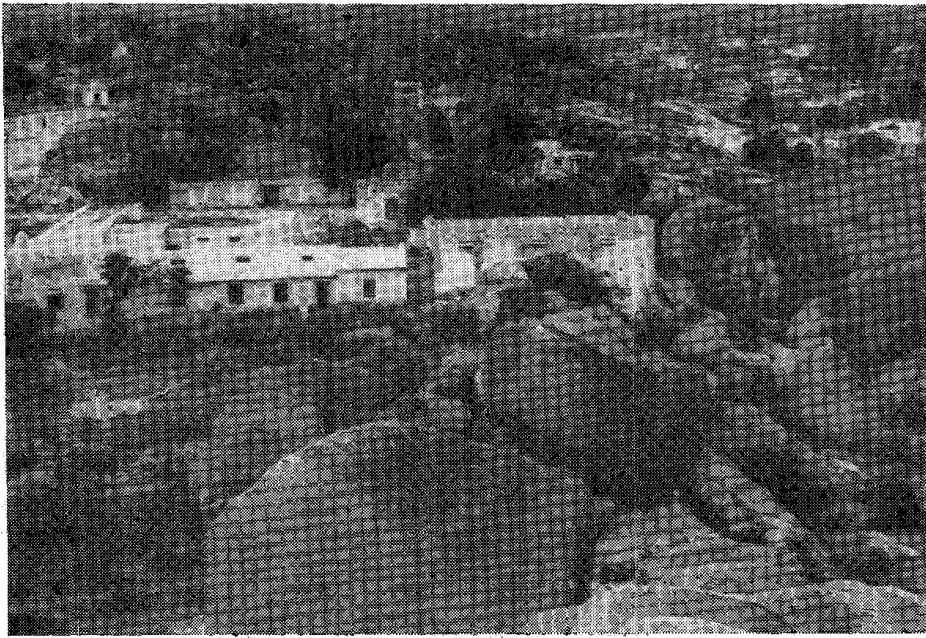
Chikkajogihalli, a modern model village in Kudligi taluk. At the top is the main street of the village, at the centre is the co-operative society and at the bottom, a row of neatly built houses of residents of the village.



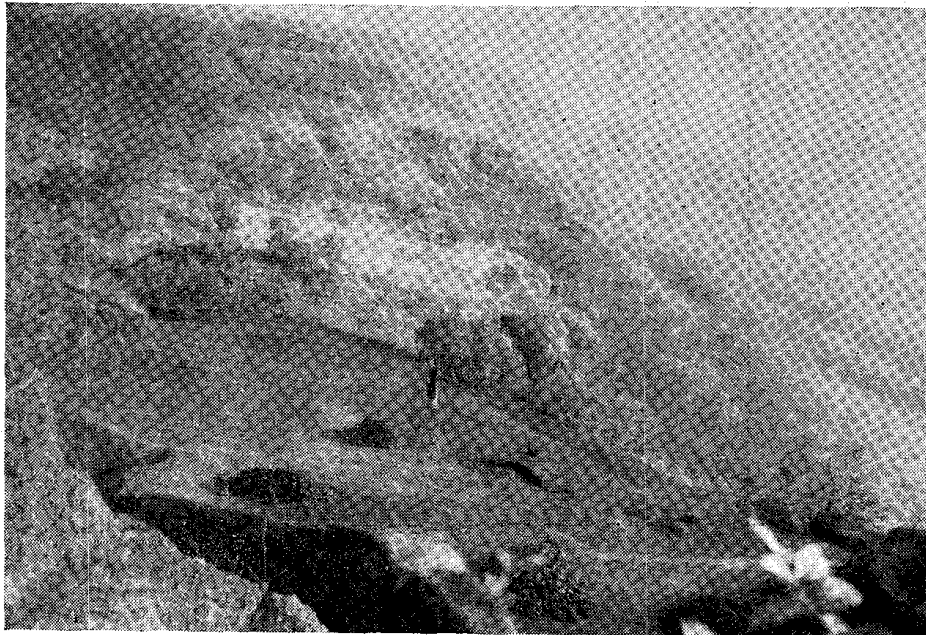
**A general view of the building of the Outpatient Department of the
Medical College Hospital at Bellary.**



A sectional view of the Vijayanagar College at Hospet.

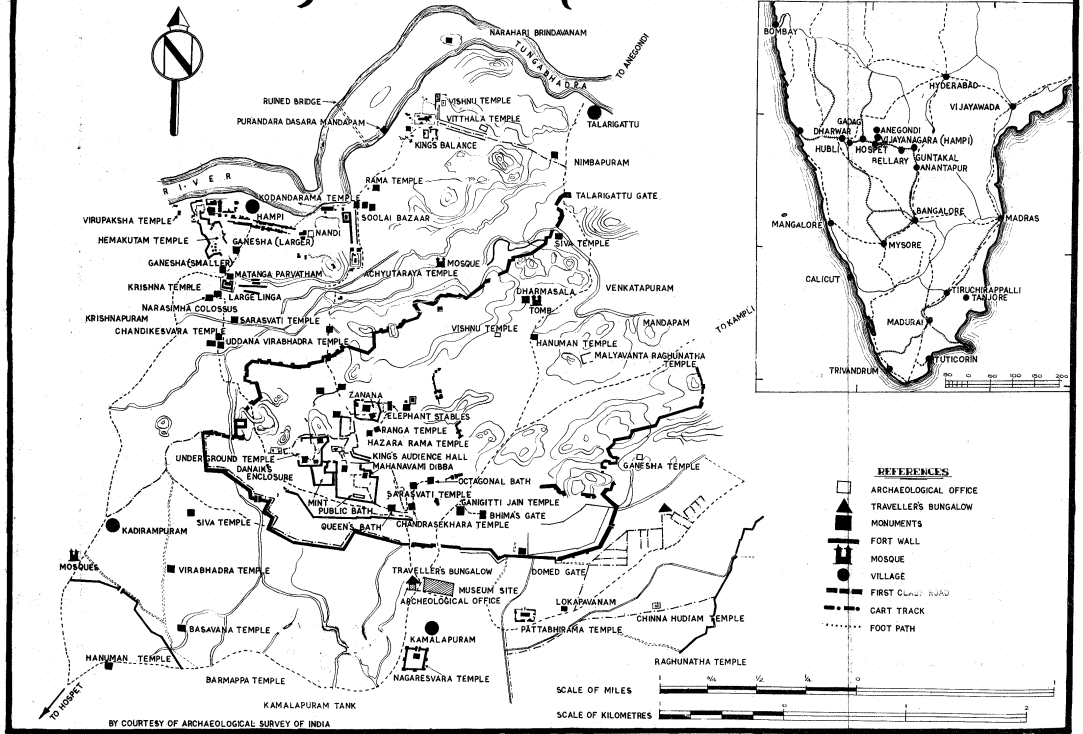


Ratnakuta Hill, Hampi, which has the Rajachandra Ashram



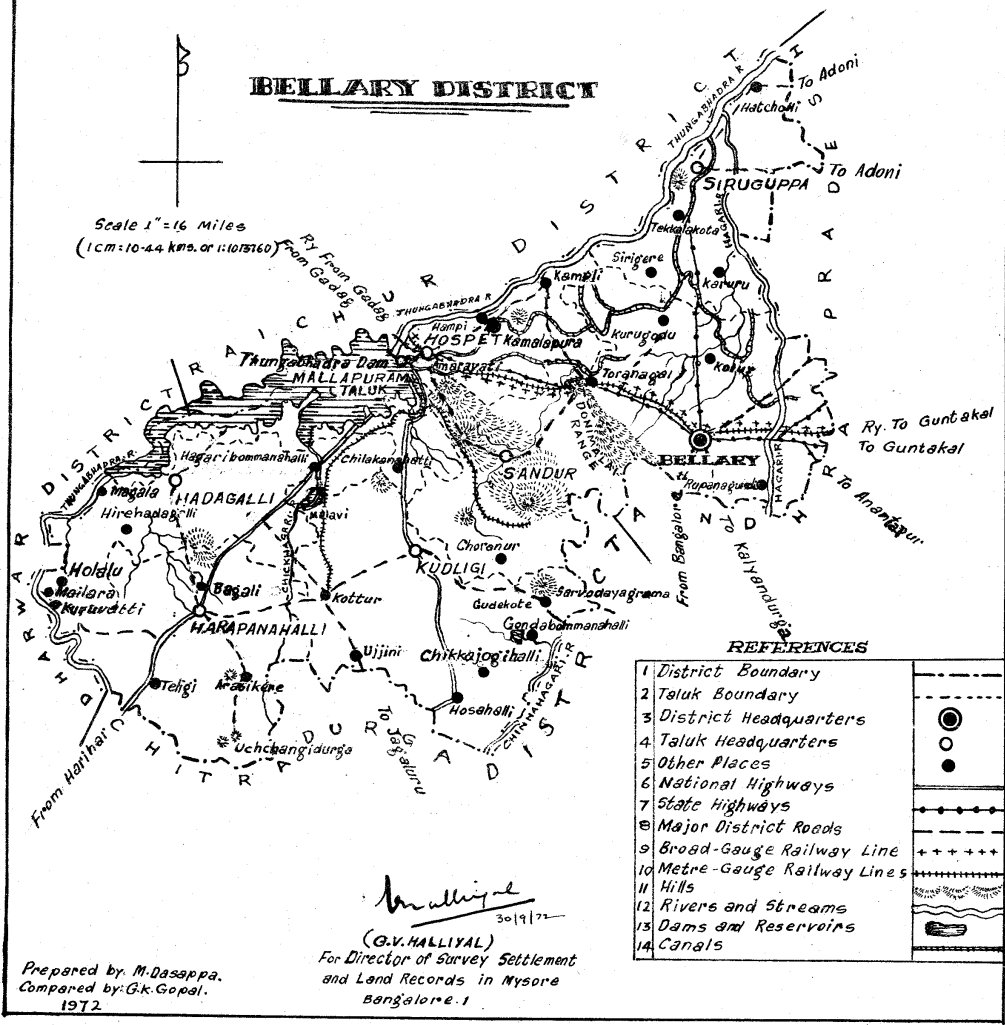
A view of Ramgad Hill Station

VIJAYANAGARA (HAMPI)



BELLARY DISTRICT

Scale 1" = 16 Miles
(1 cm = 10.44 kms. or 1:1013160)



REFERENCES

1 District Boundary	
2 Taluk Boundary	
3 District Headquarters	
4 Taluk Headquarters	
5 Other Places	
6 National Highways	
7 State Highways	
8 Major District Roads	
9 Broad-Gauge Railway Line	
10 Metre-Gauge Railway Lines	
11 Hills	
12 Rivers and Streams	
13 Dams and Reservoirs	
14 Canals	

G.V. Malliyal
30/9/72

(G.V. MALLIYAL)
For Director of Survey Settlement
and Land Records in Mysore
Bangalore. 1

Prepared by M. Dasappa.
Compared by G.K. Gopal.
1972